



SCOTIABANK CANADIAN HEDGE FUND INDEX

The Scotiabank Canadian Hedge Fund Index ended May 2020 up 1.50% MOM on an asset-weighted basis and up 2.97% MOM on an equal-weighted basis.

The aim of the Scotiabank Canadian Hedge Fund Index is to provide a comprehensive overview of the Canadian Hedge Fund universe. To achieve this, index returns are calculated using both an equal weighting and an asset-based weighting of the funds. The index includes both open and closed funds with a minimum AUM of C\$15 million and at least a 12 month track record of returns, managed by Canadian-domiciled hedge fund managers.

Index Summary

*Month End May-20	Value	Return MoM	Return YTD	Ann. Vol***	Rolling 12 Mth	Sharpe Ratio^	Correlation to S&P 500^	Correlation to S&P/TSX 60 Composite^
Scotiabank Canadian Hedge Fund Index Asset-Weighted	2,415.86	1.50%	-0.90%	8.60%	0.71%	0.53	0.31	0.65
Scotiabank Canadian Hedge Fund Index Equal-Weighted	1,810.01	2.97%	-2.96%	8.02%	-0.92%	0.33	0.54	0.81
S&P/TSX 60 Composite	15,192.83	2.79%	-10.96%	13.49%				
S&P 500 (quoted in USD)	3,044.31	4.53%	-5.77%	14.58%				
S&P 500 (CAD-adjusted)	4,195.06	3.29%	-0.04%	11.75%				
S&P 500 (Total Return)	6,227.81	4.76%	-4.97%	N/A	12.86%			
DEX 91 Day Treasury Bill Index †	420.71	0.05%	0.79%	2.18%				
DEX Universe Bond Index ‡	1,182.58	0.32%	5.67%	3.67%				

*All returns quoted in CAD except where indicated

**Compound annual returns since index inception (December 31, 2004)

*** Of monthly returns

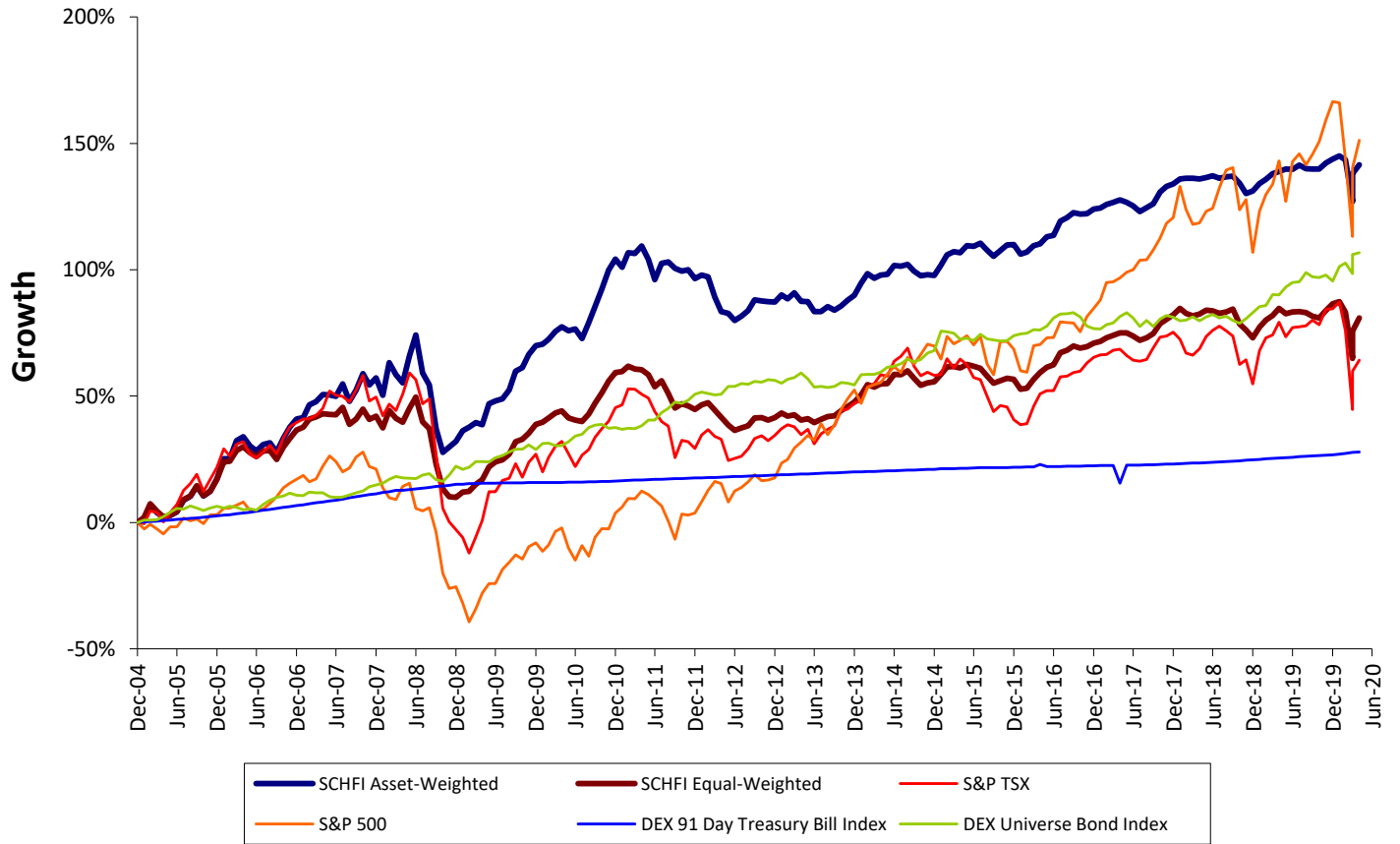
† Formerly: Scotia Capital 91Day Treasury Bill Index

‡ Formerly: Scotia Capital Universe Bond Index

^ Values are calculated monthly



Historical Monthly Performance





Historical Monthly Returns

Scotiabank Canadian Hedge Fund Index Asset-Weighted

	Jan	Feb	Mar	Apr	May	Jun	Jul	Aug	Sep	Oct	Nov	Dec	YTD
2005	1.74%	5.01%	-2.68%	-1.85%	0.76%	1.30%	4.50%	1.39%	3.58%	-3.32%	1.58%	4.52%	17.35%
2006	6.73%	0.02%	5.65%	1.18%	-2.76%	-1.46%	2.01%	0.54%	-2.86%	4.31%	3.25%	2.31%	20.05%
2007	0.49%	3.48%	0.89%	1.95%	-0.15%	-0.37%	3.34%	-4.51%	3.03%	4.31%	-2.86%	1.83%	11.61%
2008	-4.34%	8.56%	-2.95%	-2.05%	6.86%	5.03%	-8.61%	-2.99%	-11.17%	-6.92%	1.65%	1.81%	-15.94%
2009	3.09%	1.04%	1.39%	-0.61%	5.91%	0.82%	0.50%	2.42%	4.84%	0.85%	3.24%	2.12%	28.62%
2010	0.32%	1.18%	1.78%	1.02%	-0.86%	0.42%	-2.20%	3.71%	3.58%	3.69%	3.85%	2.23%	20.16%
2011	-1.61%	2.83%	-0.09%	1.42%	-2.59%	-3.86%	3.29%	0.21%	-1.22%	-0.55%	0.27%	-1.72%	-3.77%
2012	0.65%	-0.35%	-4.06%	-2.99%	-0.41%	-1.53%	0.96%	1.21%	2.27%	-0.19%	-0.16%	-0.08%	-4.73%
2013	1.47%	-0.76%	1.26%	-1.80%	-0.08%	-2.07%	0.02%	1.07%	-0.76%	0.90%	1.20%	1.01%	1.40%
2014	2.54%	1.91%	-0.87%	0.63%	0.15%	1.73%	-0.13%	0.37%	-1.32%	-0.91%	0.19%	-0.14%	4.14%
2015	2.06%	2.04%	0.62%	-0.26%	1.36%	-0.09%	0.63%	-1.34%	-1.19%	1.09%	1.10%	0.08%	6.21%
2016	-1.84%	0.40%	1.24%	0.32%	1.35%	0.28%	2.63%	0.62%	0.92%	-0.29%	0.06%	0.85%	6.68%
2017	0.17%	0.65%	0.35%	0.42%	-0.39%	-0.62%	-1.00%	0.70%	0.63%	2.08%	0.99%	0.40%	4.43%
2018	0.84%	0.10%	0.03%	-0.14%	0.22%	0.31%	-0.38%	0.20%	0.14%	-1.20%	-1.72%	0.42%	-1.19%
2019	1.26%	0.72%	0.96%	0.33%	0.44%	-0.05%	0.70%	-0.61%	-0.02%	-0.01%	1.00%	0.61%	5.45%
2020	0.52%	-0.63%	-6.82%	4.90%	1.50%								-0.90%

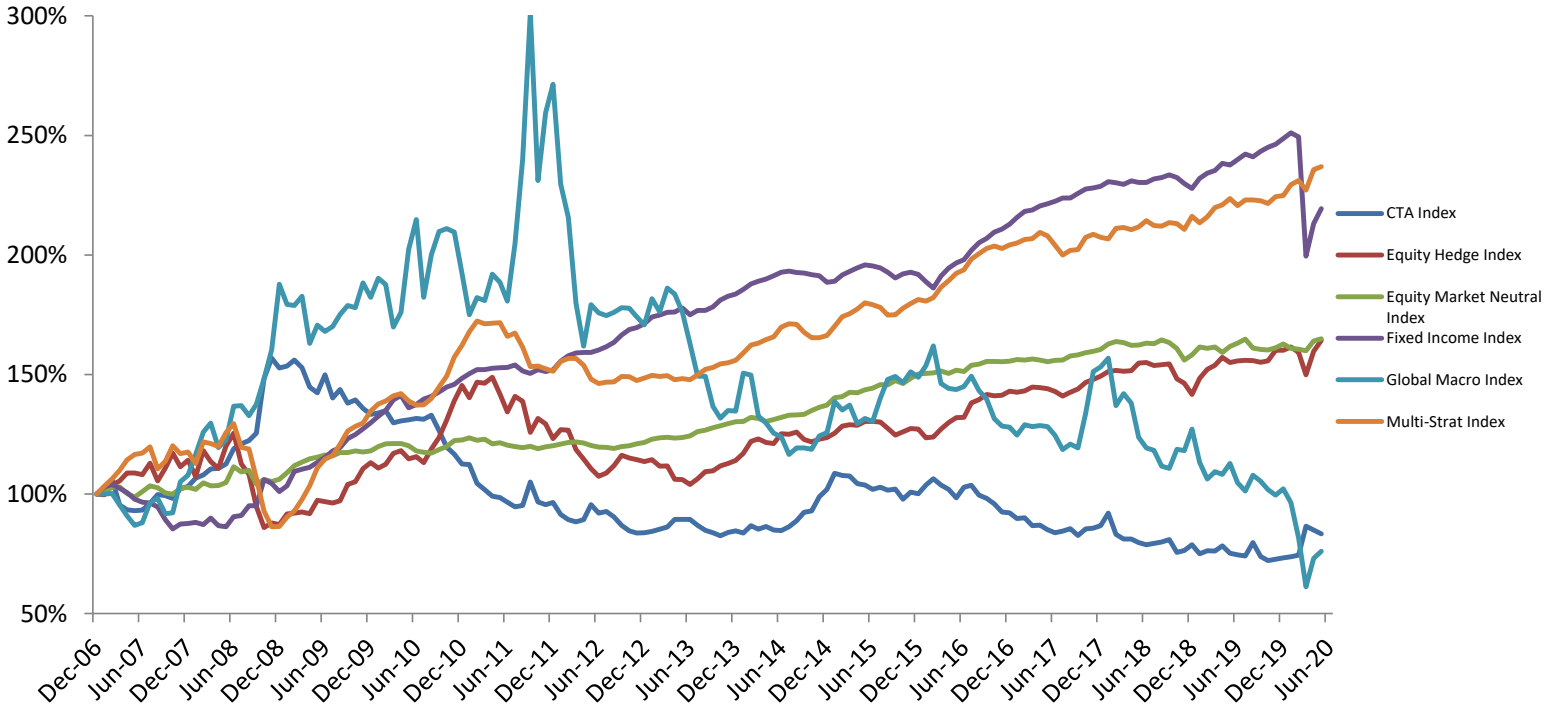
Scotiabank Canadian Hedge Fund Index Equal-Weighted

	Jan	Feb	Mar	Apr	May	Jun	Jul	Aug	Sep	Oct	Nov	Dec	YTD
2005	2.05%	5.32%	-2.83%	-2.18%	0.56%	1.63%	4.48%	1.36%	3.58%	-3.42%	1.68%	4.11%	17.10%
2006	5.86%	0.19%	3.44%	1.20%	-1.89%	-1.19%	1.86%	0.07%	-2.77%	3.95%	2.66%	2.45%	16.62%
2007	0.88%	2.30%	0.57%	0.91%	-0.18%	-0.11%	2.06%	-4.57%	1.47%	2.84%	-2.84%	0.92%	4.07%
2008	-3.27%	4.96%	-2.12%	-1.12%	3.98%	3.03%	-6.55%	-1.89%	-10.22%	-7.98%	-2.73%	-0.25%	-22.64%
2009	1.94%	0.28%	2.39%	1.59%	4.33%	1.64%	0.68%	1.77%	3.90%	0.77%	1.79%	2.59%	26.31%
2010	0.56%	1.24%	1.33%	0.68%	-2.02%	-0.60%	-0.33%	2.09%	2.99%	2.80%	3.05%	2.20%	14.78%
2011	0.24%	1.29%	-0.70%	-0.20%	-1.15%	-3.08%	1.57%	-3.22%	-3.81%	1.14%	-0.50%	-0.97%	-9.17%
2012	1.24%	0.59%	-2.06%	-1.86%	-2.21%	-1.56%	0.77%	0.58%	2.26%	0.12%	-0.71%	0.66%	-2.28%
2013	1.25%	-0.85%	0.39%	-1.47%	0.39%	-1.05%	0.85%	0.79%	0.27%	1.41%	1.15%	1.22%	4.38%
2014	1.89%	2.67%	-0.62%	0.84%	0.11%	2.32%	-0.06%	0.97%	-1.89%	-1.77%	0.64%	0.32%	5.44%
2015	1.89%	1.85%	0.07%	-0.40%	0.88%	-0.41%	-0.53%	-1.89%	-1.77%	0.58%	0.65%	-0.24%	0.62%
2016	-2.51%	0.27%	2.25%	1.77%	1.30%	0.57%	2.98%	0.53%	1.02%	-0.47%	0.35%	0.80%	9.12%
2017	0.39%	0.81%	0.58%	0.59%	0.03%	-0.75%	-0.98%	0.61%	0.97%	2.19%	0.96%	1.05%	6.60%
2018	1.37%	-1.05%	-0.59%	0.39%	0.88%	-0.17%	-0.54%	0.34%	0.62%	-3.18%	-1.35%	-1.74%	-5.01%
2019	2.41%	1.61%	1.01%	1.55%	-1.14%	0.33%	0.12%	-0.22%	-0.83%	-0.35%	1.62%	1.44%	7.74%
2020	0.46%	-2.22%	-9.99%	6.59%	2.97%								-2.96%

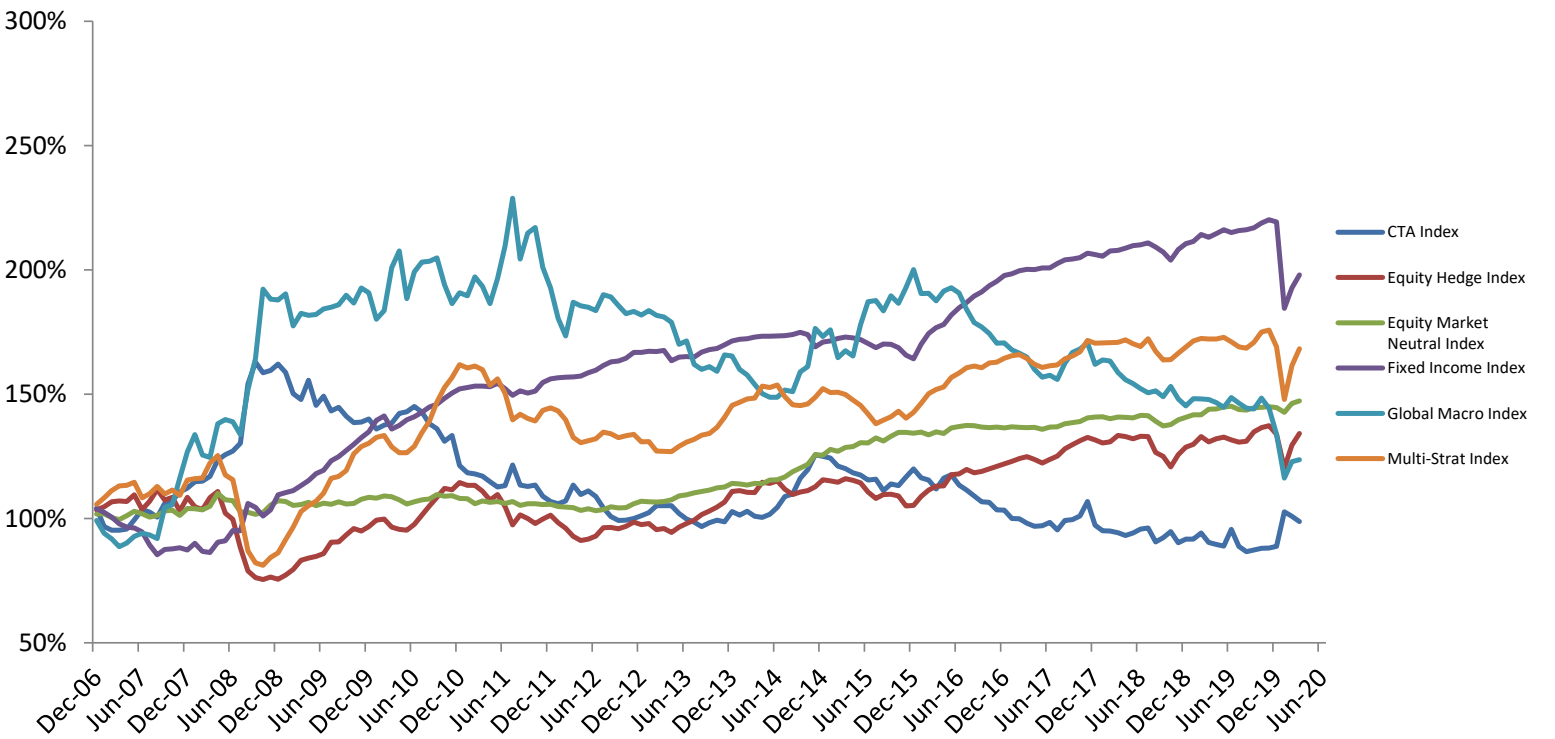


Sub-Index Performance

Asset-Weighted



Equal-Weighted





CTA Index EW

	Jan	Feb	Mar	Apr	May	Jun	Jul	Aug	Sep	Oct	Nov	Dec	YTD
2007	0.98%	3.12%	-7.15%	-1.43%	-0.04%	0.46%	3.89%	4.19%	-0.99%	-1.96%	5.48%	1.05%	7.20%
2008	3.24%	1.33%	2.36%	0.18%	1.64%	5.70%	1.68%	1.15%	2.54%	18.17%	5.79%	-2.64%	47.93%
2009	0.55%	1.64%	-2.10%	-5.30%	-1.60%	5.26%	-6.48%	2.50%	-3.95%	1.02%	-2.53%	-1.83%	-12.66%
2010	0.20%	0.85%	-2.84%	1.13%	0.62%	2.78%	0.51%	1.44%	-1.54%	-3.30%	-1.44%	-3.72%	-5.42%
2011	1.82%	-9.04%	-2.39%	-0.43%	-0.72%	-1.90%	-1.90%	0.53%	7.29%	-6.68%	-0.44%	0.49%	-13.40%
2012	-3.93%	-1.98%	-0.86%	1.09%	5.92%	-3.37%	1.42%	-2.05%	-4.24%	-3.31%	-1.58%	0.08%	-12.48%
2013	0.66%	1.12%	1.25%	2.75%	0.00%	-0.04%	-2.97%	-2.22%	-1.20%	-1.78%	1.55%	1.11%	0.07%
2014	-0.71%	4.18%	-1.35%	1.49%	-2.00%	-0.40%	1.19%	2.80%	4.19%	0.91%	5.73%	3.00%	20.40%
2015	5.08%	-0.55%	-0.59%	-2.58%	-0.82%	-1.38%	-0.80%	-1.73%	0.33%	-4.00%	2.47%	-0.63%	-5.37%
2016	3.07%	2.84%	-3.02%	-0.77%	-3.09%	3.86%	1.16%	-3.52%	-1.76%	-2.15%	-2.09%	-0.26%	-5.94%
2017	-2.87%	-0.02%	-3.25%	-0.19%	-1.80%	-1.20%	0.22%	1.44%	-3.16%	4.02%	0.37%	1.44%	-5.13%
2018	5.79%	-8.93%	-2.31%	-0.08%	-0.78%	-1.17%	1.10%	1.69%	0.48%	-5.87%	1.87%	2.64%	-6.25%
2019	-4.73%	1.71%	-0.09%	2.73%	-4.00%	-0.98%	-0.71%	7.64%	-7.25%	-2.30%	0.77%	0.69%	-7.11%
2020	0.13%	0.85%	15.55%	-1.66%	-2.18%								12.23%

CTA Index AW

	Jan	Feb	Mar	Apr	May	Jun	Jul	Aug	Sep	Oct	Nov	Dec	YTD
2007	1.58%	4.57%	-10.13%	-2.15%	-0.44%	0.31%	3.10%	3.72%	-0.48%	-1.09%	4.10%	1.00%	3.24%
2008	3.24%	1.33%	2.36%	0.18%	1.64%	5.70%	1.68%	1.15%	2.54%	18.17%	5.79%	-2.64%	47.93%
2009	0.55%	1.64%	-2.10%	-5.30%	-1.60%	5.26%	-6.48%	2.50%	-3.95%	1.02%	-2.53%	-1.83%	-12.66%
2010	0.36%	0.78%	-3.76%	0.58%	0.35%	0.41%	-0.24%	1.34%	-4.78%	-5.50%	-2.52%	-3.50%	-15.59%
2011	-0.20%	-7.00%	-2.51%	-2.71%	-0.61%	-1.92%	-2.07%	0.60%	10.34%	-7.91%	-1.15%	0.85%	-14.36%
2012	-5.20%	-2.34%	-0.99%	0.98%	7.05%	-3.72%	0.76%	-2.47%	-3.89%	-2.64%	-1.11%	0.19%	-13.08%
2013	0.62%	1.14%	1.06%	3.70%	-0.02%	0.08%	-2.82%	-2.42%	-1.18%	-1.42%	1.65%	0.72%	0.91%
2014	-1.01%	3.64%	-1.74%	1.40%	-1.71%	-0.30%	1.95%	2.88%	3.90%	0.62%	6.37%	3.22%	20.60%
2015	6.51%	-0.80%	-0.16%	-3.02%	-0.52%	-1.78%	0.86%	-1.15%	0.47%	-4.15%	3.04%	-0.68%	-1.79%
2016	3.56%	2.52%	-2.44%	-1.72%	-3.52%	4.59%	0.79%	-4.05%	-1.39%	-2.29%	-3.58%	-0.30%	-7.98%
2017	-2.61%	0.31%	-3.66%	0.21%	-2.21%	-1.37%	0.74%	1.22%	-3.28%	3.33%	0.36%	1.21%	-5.84%
2018	6.02%	-9.67%	-2.32%	-0.02%	-1.89%	-1.01%	0.69%	0.66%	1.27%	-6.55%	1.00%	3.10%	-9.27%
2019	-4.77%	1.68%	-0.10%	2.75%	-3.92%	-0.93%	-0.57%	7.57%	-7.25%	-2.31%	0.80%	0.77%	-6.86%
2020	0.57%	0.92%	16.18%	-1.82%	-1.91%								13.57%

Equity Hedge Index EW

	Jan	Feb	Mar	Apr	May	Jun	Jul	Aug	Sep	Oct	Nov	Dec	YTD
2007	0.67%	2.78%	1.23%	1.85%	0.35%	-0.25%	2.60%	-5.42%	3.22%	4.37%	-3.85%	1.14%	8.56%
2008	-5.07%	5.24%	-3.45%	-1.11%	4.69%	2.29%	-7.93%	-2.35%	-11.53%	-10.48%	-3.42%	-1.05%	-30.50%
2009	1.30%	-1.11%	2.23%	2.88%	4.56%	1.18%	0.79%	1.29%	5.38%	0.07%	3.13%	2.70%	27.10%
2010	-1.00%	1.87%	2.71%	0.42%	-3.23%	-0.93%	-0.36%	2.44%	3.78%	3.70%	3.23%	3.39%	16.93%
2011	-0.52%	2.56%	-0.98%	0.08%	-2.14%	-3.25%	2.17%	-4.38%	-7.15%	4.19%	-1.42%	-2.02%	-12.62%
2012	1.77%	1.62%	-3.00%	-2.27%	-3.34%	-1.81%	0.51%	1.38%	3.59%	0.12%	-0.54%	1.01%	-1.21%
2013	1.80%	-1.05%	0.48%	-2.51%	0.40%	-1.59%	2.32%	1.50%	1.29%	2.26%	1.46%	1.53%	8.05%
2014	1.97%	3.97%	0.32%	-0.62%	-0.14%	3.76%	-0.37%	0.88%	-2.89%	-1.98%	1.00%	0.47%	6.32%
2015	1.44%	2.49%	-0.40%	-0.51%	1.26%	-0.53%	-0.89%	-3.26%	-2.35%	1.51%	0.05%	-0.64%	-1.95%
2016	-3.62%	0.20%	3.43%	2.28%	1.44%	0.14%	3.94%	0.30%	1.47%	-1.09%	0.44%	0.87%	10.03%
2017	0.81%	0.84%	0.86%	0.91%	0.59%	-0.85%	-1.17%	1.12%	1.13%	2.33%	1.32%	1.22%	9.45%
2018	1.03%	-0.77%	-0.98%	0.37%	2.00%	-0.37%	-0.69%	0.74%	-0.04%	-4.80%	-1.26%	-3.45%	-8.09%
2019	4.13%	2.44%	0.88%	2.34%	-1.57%	0.96%	0.47%	-0.82%	-0.67%	0.25%	2.95%	1.21%	13.15%
2020	0.57%	-2.56%	-10.10%	7.58%	3.67%								-1.74%

Equity Hedge Index AW

	Jan	Feb	Mar	Apr	May	Jun	Jul	Aug	Sep	Oct	Nov	Dec	YTD
2007	-0.33%	4.15%	1.65%	3.09%	-0.02%	-0.57%	4.38%	-6.50%	5.03%	5.62%	-4.82%	2.46%	14.18%
2008	-5.96%	10.01%	-3.81%	-2.52%	8.46%	4.48%	-10.32%	-3.79%	-12.46%	-9.24%	2.15%	-0.68%	-23.56%
2009	4.99%	0.45%	0.42%	-0.68%	6.09%	-0.64%	-0.56%	1.02%	7.02%	1.12%	5.15%	2.30%	29.65%
2010	-1.99%	1.45%	4.02%	0.94%	-2.88%	0.78%	-2.15%	5.03%	4.10%	5.85%	6.16%	4.64%	28.54%
2011	-3.57%	4.65%	-0.26%	1.66%	-4.74%	-5.24%	4.89%	-1.52%	-9.31%	4.60%	-1.77%	-4.74%	-15.32%
2012	3.07%	-0.18%	-6.35%	-3.39%	-3.51%	-2.86%	1.23%	2.84%	3.85%	-0.91%	-0.64%	-0.69%	-7.78%
2013	0.69%	-2.39%	0.09%	-5.02%	-0.09%	-1.86%	2.28%	2.72%	0.31%	1.94%	0.92%	1.06%	0.39%
2014	2.65%	4.23%	0.88%	-1.17%	-0.37%	3.35%	-0.18%	0.70%	-2.38%	-0.89%	0.98%	0.48%	8.39%
2015	1.56%	2.36%	0.44%	-0.19%	1.20%	0.01%	-0.15%	-2.04%	-2.25%	1.12%	1.05%	-0.10%	2.94%
2016	-2.86%	0.28%	2.65%	2.14%	1.57%	0.11%	4.57%	0.96%	1.55%	-0.36%	0.14%	1.20%	12.42%
2017	-0.29%	0.37%	1.09%	-0.15%	-0.27%	-0.79%	-1.38%	1.19%	0.94%	1.91%	0.84%	0.96%	4.43%
2018	1.24%	0.32%	-0.25%	0.22%	2.09%	0.11%	-0.80%	0.26%	0.18%	-4.07%	-1.19%	-3.26%	-5.19%
2019	4.77%	2.59%	1.08%	2.14%	-1.38%	0.50%	0.16%	-0.09%	-0.45%	0.38%	2.84%	0.02%	13.12%
2020	0.86%	-1.45%	-5.89%	6.57%	2.82%								2.50%



Equity Market Neutral Index EW

	Jan	Feb	Mar	Apr	May	Jun	Jul	Aug	Sep	Oct	Nov	Dec	YTD
2007	0.43%	1.36%	0.11%	-1.59%	-0.70%	1.57%	1.76%	-1.02%	-1.28%	0.67%	1.74%	0.32%	3.34%
2008	-2.03%	2.74%	-0.13%	-0.38%	1.35%	5.00%	-2.38%	-0.35%	-4.19%	-0.14%	-0.81%	0.64%	-1.00%
2009	2.96%	1.77%	-0.35%	-1.42%	0.25%	0.85%	-1.26%	1.01%	-0.43%	0.95%	-0.84%	0.22%	3.68%
2010	1.51%	0.80%	-0.31%	0.75%	-0.29%	-1.09%	-1.59%	0.87%	0.74%	0.31%	1.63%	-0.63%	2.70%
2011	0.20%	-1.01%	-0.11%	-1.84%	1.04%	-0.55%	0.35%	-0.71%	0.66%	-1.47%	0.65%	0.06%	-2.74%
2012	-0.38%	0.11%	-0.79%	-0.29%	-0.18%	-1.02%	0.64%	-0.83%	0.49%	1.10%	-0.43%	0.11%	-1.47%
2013	1.49%	0.88%	-0.15%	-0.15%	0.25%	0.63%	1.44%	0.43%	0.70%	0.49%	0.51%	0.83%	7.60%
2014	0.28%	1.34%	-0.22%	-0.43%	0.64%	-0.12%	1.29%	0.12%	0.90%	1.83%	1.22%	1.26%	8.39%
2015	3.19%	-0.19%	1.87%	-0.61%	1.25%	0.31%	1.17%	-0.06%	1.58%	-0.93%	1.38%	1.22%	10.57%
2016	0.01%	-0.25%	0.31%	-0.84%	0.94%	-0.50%	1.67%	0.37%	0.35%	-0.07%	-0.37%	-0.18%	1.44%
2017	0.11%	-0.18%	0.26%	-0.17%	-0.04%	0.07%	-0.56%	0.65%	0.12%	0.84%	0.34%	0.31%	1.76%
2018	1.12%	0.24%	0.07%	-0.55%	0.43%	-0.10%	-0.09%	0.66%	-0.03%	-1.61%	-1.35%	0.41%	-0.84%
2019	1.37%	0.70%	0.75%	0.02%	1.59%	0.04%	0.51%	0.26%	-0.91%	-0.19%	0.63%	0.17%	5.03%
2020	0.12%	-0.25%	-1.26%	2.50%	0.72%								1.81%

Equity Market Neutral Index AW

	Jan	Feb	Mar	Apr	May	Jun	Jul	Aug	Sep	Oct	Nov	Dec	YTD
2007	1.01%	1.78%	0.13%	-2.61%	-1.45%	2.24%	2.45%	-0.87%	-2.08%	-0.61%	2.59%	0.42%	2.86%
2008	-0.89%	2.74%	-1.21%	0.09%	1.25%	6.25%	-1.90%	0.60%	-5.34%	1.86%	-0.72%	0.83%	3.19%
2009	2.58%	2.71%	1.37%	1.24%	0.57%	0.75%	-0.24%	1.12%	0.03%	0.64%	-0.42%	0.43%	11.26%
2010	1.47%	1.01%	0.05%	0.03%	-0.73%	-1.81%	-0.47%	-0.32%	1.25%	1.06%	2.12%	0.21%	3.86%
2011	0.67%	-0.83%	0.45%	-1.62%	0.40%	-0.91%	-0.47%	-0.33%	0.46%	-0.87%	0.68%	0.43%	-1.96%
2012	0.50%	0.62%	0.13%	-0.31%	-0.86%	-0.60%	-0.04%	-0.37%	0.66%	0.29%	0.60%	0.54%	1.14%
2013	1.07%	0.52%	0.17%	-0.26%	0.18%	0.56%	1.39%	0.51%	0.81%	0.62%	0.71%	0.58%	7.06%
2014	0.11%	1.28%	-0.34%	-0.89%	0.62%	0.68%	0.69%	0.07%	0.18%	1.21%	0.97%	0.67%	5.35%
2015	2.23%	0.39%	1.26%	-0.19%	0.93%	0.45%	1.08%	-0.13%	1.26%	-0.84%	1.48%	1.27%	9.55%
2016	0.10%	0.18%	0.50%	-0.68%	0.92%	-0.39%	1.75%	0.32%	0.74%	-0.05%	-0.04%	0.16%	3.55%
2017	0.42%	-0.12%	0.26%	-0.30%	-0.45%	0.38%	0.12%	1.10%	0.24%	0.64%	0.32%	0.52%	3.15%
2018	1.43%	0.59%	-0.23%	-0.72%	0.03%	0.50%	-0.14%	1.00%	-0.66%	-1.57%	-2.96%	1.35%	-1.46%
2019	2.11%	-0.35%	0.37%	-1.40%	1.58%	0.83%	1.01%	-2.23%	-0.41%	-0.08%	0.56%	0.99%	2.95%
2020	-1.13%	-0.21%	-0.45%	2.59%	0.58%								1.34%

Fixed Income Index EW

	Jan	Feb	Mar	Apr	May	Jun	Jul	Aug	Sep	Oct	Nov	Dec	YTD
2007	2.99%	0.93%	-1.46%	-1.80%	-2.71%	-1.35%	-0.32%	-1.69%	-5.60%	-4.34%	2.44%	0.24%	-12.27%
2008	0.54%	-1.04%	3.08%	-3.59%	-0.54%	4.90%	0.53%	4.58%	-0.03%	11.56%	-1.53%	-3.31%	15.15%
2009	2.42%	5.81%	0.90%	0.65%	1.88%	1.78%	2.35%	1.19%	3.21%	1.38%	1.91%	1.93%	28.46%
2010	2.14%	1.77%	3.35%	1.32%	-3.70%	1.05%	1.65%	0.81%	1.28%	1.50%	0.79%	1.65%	14.32%
2011	1.41%	1.13%	0.31%	0.37%	0.02%	-0.15%	0.92%	-1.42%	-1.79%	1.22%	-0.61%	0.52%	1.90%
2012	2.35%	0.91%	0.31%	0.11%	0.12%	0.22%	0.80%	0.68%	1.15%	0.96%	0.20%	0.67%	8.79%
2013	1.44%	0.00%	0.24%	-0.05%	0.27%	-2.48%	0.88%	0.14%	-0.10%	1.22%	0.59%	0.23%	2.36%
2014	0.87%	0.96%	0.35%	0.17%	0.35%	0.20%	0.05%	0.05%	0.03%	0.25%	0.55%	-0.49%	3.38%
2015	-2.83%	1.11%	0.26%	0.55%	0.35%	-0.18%	-0.38%	-0.97%	-0.99%	0.85%	-0.02%	-0.79%	-3.04%
2016	-1.78%	-0.89%	3.54%	2.58%	1.32%	0.72%	2.10%	1.60%	1.19%	1.35%	0.93%	1.24%	14.71%
2017	0.98%	1.16%	0.34%	0.64%	0.25%	-0.04%	0.34%	0.01%	0.89%	0.73%	0.14%	0.30%	5.89%
2018	0.85%	-0.26%	-0.32%	1.01%	0.15%	0.39%	0.48%	0.17%	0.39%	-0.82%	-0.92%	-1.60%	-0.51%
2019	2.12%	1.11%	0.45%	1.28%	-0.52%	0.70%	0.73%	-0.50%	0.36%	0.13%	0.36%	0.88%	7.30%
2020	0.64%	-0.41%	-15.86%	4.43%	2.72%								-9.54%

Fixed Income Index AW

	Jan	Feb	Mar	Apr	May	Jun	Jul	Aug	Sep	Oct	Nov	Dec	YTD
2007	2.99%	0.93%	-1.46%	-1.80%	-2.71%	-1.35%	-0.32%	-1.69%	-5.60%	-4.34%	2.44%	0.24%	-12.27%
2008	0.54%	-1.04%	3.08%	-3.59%	-0.54%	4.90%	0.53%	4.58%	-0.03%	11.56%	-1.53%	-3.31%	15.15%
2009	2.42%	5.81%	0.90%	0.65%	1.88%	1.78%	2.35%	1.19%	3.21%	1.38%	1.91%	1.93%	28.46%
2010	2.14%	1.77%	3.35%	1.32%	-3.70%	1.05%	1.65%	0.81%	1.28%	1.50%	0.79%	1.65%	14.32%
2011	1.37%	1.08%	0.05%	0.38%	0.11%	0.09%	0.66%	-1.63%	-0.66%	1.03%	-0.51%	0.48%	2.44%
2012	2.37%	1.45%	0.73%	0.15%	0.04%	0.59%	0.91%	1.14%	1.88%	1.35%	0.50%	0.91%	12.67%
2013	1.66%	0.47%	0.64%	0.10%	0.93%	-1.59%	1.03%	0.04%	0.79%	1.61%	0.92%	0.47%	7.26%
2014	1.07%	1.24%	0.59%	0.48%	0.76%	0.72%	0.25%	-0.26%	-0.15%	-0.34%	-0.22%	-1.43%	2.70%
2015	0.21%	1.38%	0.79%	0.78%	0.63%	-0.22%	-0.39%	-0.95%	-1.27%	0.91%	0.39%	-0.51%	1.72%
2016	-1.59%	-1.36%	2.65%	1.75%	1.13%	0.69%	1.93%	1.59%	0.89%	1.28%	0.61%	0.96%	10.96%
2017	1.34%	1.17%	0.28%	0.75%	0.43%	0.46%	0.62%	0.02%	0.85%	0.79%	0.24%	0.25%	7.43%
2018	0.89%	-0.20%	-0.32%	0.68%	-0.29%	-0.03%	0.66%	0.25%	0.50%	-0.48%	-1.10%	-0.91%	-0.40%
2019	1.86%	0.97%	0.49%	1.25%	-0.29%	0.94%	0.97%	-0.48%	0.93%	0.73%	0.50%	0.96%	9.19%
2020	0.97%	-0.70%	-19.99%	6.80%	2.94%								-11.80%



Global Macro Index EW

	Jan	Feb	Mar	Apr	May	Jun	Jul	Aug	Sep	Oct	Nov	Dec	YTD
2007	1.49%	-2.26%	-5.17%	-2.43%	-3.42%	1.71%	2.98%	1.30%	-0.71%	-1.55%	13.60%	1.03%	5.51%
2008	10.12%	9.16%	5.45%	-6.10%	-0.82%	10.87%	1.25%	-0.71%	-3.67%	13.49%	8.23%	17.04%	82.22%
2009	-2.11%	-0.21%	1.35%	-6.77%	2.84%	-0.45%	0.20%	1.24%	0.32%	0.57%	2.04%	-1.67%	-2.95%
2010	3.25%	-1.00%	-5.56%	1.94%	9.42%	3.33%	-9.23%	5.68%	1.97%	0.19%	0.64%	-5.23%	3.98%
2011	-3.94%	2.34%	-0.63%	4.03%	-1.95%	-3.56%	5.39%	6.67%	9.16%	-10.70%	5.10%	1.03%	11.82%
2012	-7.37%	-4.12%	-6.35%	-3.90%	7.81%	-0.76%	-0.33%	-0.70%	3.43%	-0.45%	-1.86%	-1.73%	-15.95%
2013	0.50%	-0.79%	0.95%	-1.02%	-0.37%	-1.19%	-4.92%	0.77%	-5.48%	-1.23%	0.67%	-1.16%	-12.70%
2014	4.16%	-0.32%	-3.22%	-1.44%	-2.41%	-2.40%	-0.92%	-0.02%	1.96%	-0.48%	5.27%	1.37%	1.17%
2015	9.53%	-1.82%	1.56%	-6.37%	1.65%	-1.24%	7.56%	5.23%	0.25%	-2.22%	3.34%	-1.65%	15.76%
2016	3.46%	3.69%	-4.82%	0.08%	-1.58%	2.11%	0.70%	-1.14%	-3.45%	-2.85%	-0.99%	-1.50%	-6.49%
2017	-2.20%	0.06%	-1.67%	-0.76%	-0.96%	-3.02%	-1.95%	0.54%	-1.11%	4.16%	2.73%	0.79%	-3.56%
2018	1.44%	-5.06%	1.11%	-0.25%	-2.84%	-1.83%	-0.96%	-1.32%	-1.16%	0.51%	-1.50%	2.77%	-8.93%
2019	-3.30%	-1.92%	2.05%	-0.07%	-0.20%	-0.80%	-1.31%	2.69%	-1.46%	-1.43%	-0.16%	2.99%	-3.09%
2020	-2.71%	-7.27%	-13.22%	5.74%	0.66%								-16.68%

Global Macro Index AW

	Jan	Feb	Mar	Apr	May	Jun	Jul	Aug	Sep	Oct	Nov	Dec	YTD
2007	0.05%	0.24%	-4.79%	-4.85%	-4.35%	1.29%	9.64%	1.73%	-6.55%	0.41%	14.18%	2.55%	7.87%
2008	8.04%	8.02%	3.05%	-7.93%	2.62%	11.58%	0.17%	-3.05%	3.60%	7.70%	8.23%	17.04%	74.03%
2009	-4.45%	-0.27%	2.16%	-10.81%	4.67%	-1.52%	1.19%	2.96%	2.16%	-0.53%	5.88%	-3.25%	-2.92%
2010	4.39%	-1.34%	-9.48%	3.59%	14.99%	6.11%	-15.11%	9.77%	4.81%	0.64%	-0.69%	-8.26%	5.52%
2011	-8.99%	4.11%	-0.73%	6.16%	-1.80%	-4.18%	13.35%	17.23%	25.51%	-23.30%	12.31%	4.55%	41.12%
2012	-15.37%	-6.09%	-16.64%	-9.97%	10.74%	-1.90%	-0.69%	0.81%	1.08%	-0.10%	-2.01%	-1.97%	-37.07%
2013	6.41%	-3.01%	5.64%	-1.39%	-4.07%	-7.52%	-8.34%	0.01%	-8.50%	-3.59%	2.42%	-0.17%	-21.14%
2014	11.76%	-0.48%	-11.45%	-2.19%	-3.32%	-1.14%	-6.03%	2.41%	-0.04%	-0.44%	4.68%	1.08%	-6.71%
2015	10.37%	-2.49%	1.46%	-5.64%	1.68%	-0.95%	7.41%	5.62%	0.84%	-1.69%	3.08%	-1.48%	18.51%
2016	3.23%	5.34%	-9.67%	-1.46%	-0.30%	0.91%	2.99%	-4.04%	-2.50%	-5.87%	-2.34%	-0.37%	-14.07%
2017	-2.61%	3.48%	-0.59%	0.34%	-0.29%	-2.85%	-4.80%	1.92%	-1.28%	12.00%	13.14%	1.32%	19.75%
2018	2.39%	-12.72%	3.74%	-2.86%	-10.31%	-3.63%	-0.85%	-5.56%	-0.82%	7.20%	-0.45%	7.60%	-17.00%
2019	-10.92%	-6.14%	2.84%	-1.04%	4.17%	-7.18%	-3.20%	6.51%	-2.31%	-3.35%	-2.31%	2.73%	-19.62%
2020	-5.79%	-15.25%	-25.06%	19.47%	4.13%								-25.57%

Multi-Strat Index EW

	Jan	Feb	Mar	Apr	May	Jun	Jul	Aug	Sep	Oct	Nov	Dec	YTD
2007	3.07%	2.51%	2.43%	2.73%	1.69%	0.28%	1.07%	-5.49%	1.59%	2.55%	-2.65%	1.41%	11.38%
2008	-1.83%	5.54%	0.54%	0.16%	5.19%	2.52%	-6.23%	-1.65%	-11.95%	-14.49%	-5.56%	-1.25%	-27.14%
2009	3.92%	2.24%	6.14%	5.45%	6.55%	2.22%	1.79%	3.02%	5.38%	0.67%	2.04%	5.58%	55.23%
2010	2.35%	1.03%	1.85%	0.52%	-3.43%	-1.80%	0.03%	2.00%	4.26%	3.43%	5.57%	3.93%	21.17%
2011	2.65%	3.34%	-0.84%	0.45%	-0.86%	-3.97%	1.71%	-3.76%	-7.07%	1.63%	-1.19%	-0.74%	-8.79%
2012	3.06%	0.68%	-0.80%	-2.55%	-5.06%	-1.55%	0.55%	0.57%	2.11%	-0.54%	-1.19%	0.59%	-4.30%
2013	0.45%	-2.28%	0.07%	-2.85%	-0.14%	-0.09%	1.69%	1.32%	0.84%	1.30%	0.48%	1.86%	2.57%
2014	2.91%	3.44%	0.89%	0.90%	0.24%	3.21%	-0.37%	0.67%	-3.02%	-2.24%	-0.18%	0.44%	6.87%
2015	1.86%	2.35%	-1.07%	0.08%	-0.59%	-1.53%	-1.38%	-2.42%	-2.73%	1.04%	0.96%	1.59%	-2.00%
2016	-1.93%	1.67%	2.50%	2.68%	1.11%	0.65%	2.49%	1.12%	1.34%	0.43%	-0.43%	1.19%	13.51%
2017	0.20%	1.00%	0.62%	0.26%	-0.96%	-1.44%	-0.71%	0.42%	0.16%	1.57%	0.66%	0.99%	2.76%
2018	2.75%	-0.66%	0.09%	0.09%	0.05%	0.61%	-0.92%	-0.70%	1.90%	-2.93%	-2.11%	0.06%	-1.88%
2019	1.59%	1.46%	1.51%	0.57%	-0.15%	0.01%	0.42%	-1.07%	-1.18%	-0.28%	1.35%	2.47%	6.82%
2020	0.43%	-3.82%	-12.56%	9.20%	4.20%								-3.89%

Multi-Strat Index AW

	Jan	Feb	Mar	Apr	May	Jun	Jul	Aug	Sep	Oct	Nov	Dec	YTD
2007	3.33%	2.89%	3.38%	4.02%	1.94%	0.53%	2.19%	-7.71%	2.88%	5.77%	-2.75%	0.52%	17.54%
2008	-4.07%	8.06%	-0.56%	-1.09%	4.89%	2.97%	-7.61%	-0.61%	-10.26%	-12.95%	-7.01%	0.15%	-26.44%
2009	4.40%	2.93%	5.14%	5.88%	7.32%	3.21%	1.38%	4.01%	4.57%	1.54%	1.13%	3.86%	55.83%
2010	2.22%	0.89%	1.52%	0.64%	-2.16%	-1.24%	0.14%	1.86%	3.43%	3.14%	5.35%	3.12%	20.35%
2011	3.56%	2.61%	-0.63%	0.14%	0.14%	-3.37%	0.83%	-3.52%	-5.05%	0.21%	-0.78%	-0.65%	-6.63%
2012	2.68%	0.84%	-0.01%	-1.81%	-3.85%	-1.23%	0.42%	0.07%	1.58%	-0.10%	-1.03%	0.68%	-1.89%
2013	0.72%	-0.25%	0.22%	-1.18%	0.33%	-0.32%	1.39%	1.55%	0.49%	1.01%	0.27%	0.63%	4.94%
2014	2.02%	2.06%	0.50%	0.90%	0.74%	2.47%	0.79%	-0.15%	-1.89%	-1.36%	-0.02%	0.53%	6.68%
2015	2.32%	2.35%	0.73%	1.11%	1.48%	-0.43%	-0.64%	-1.78%	0.01%	1.57%	1.09%	0.95%	9.04%
2016	-0.32%	0.82%	2.32%	1.50%	1.63%	0.76%	2.33%	1.15%	1.05%	0.49%	-0.47%	0.73%	12.63%
2017	0.36%	0.76%	0.14%	1.26%	-0.71%	-1.87%	-2.00%	0.95%	0.22%	2.49%	0.61%	-0.60%	1.54%
2018	-0.34%	2.15%	0.19%	-0.45%	0.55%	1.24%	-0.99%	-0.07%	0.70%	-0.21%	-1.16%	2.62%	4.24%
2019	-1.28%	1.20%	1.80%	0.50%	1.22%	-1.37%	1.12%	0.01%	-0.18%	-0.49%	1.29%	0.19%	4.03%
2020	2.01%	0.76%	-1.72%	3.74%	0.55%								5.37%



Funds Included:

Formula Growth Global Opportunities Fund Class F USD	Primevestfund	Amethyst Arbitrage Fund (CAD)
Arrow Capital Management, Inc.	Vantage Protected Performance Fund	BT Global Growth Fund LP
Auspice Capital Advisors Ltd	Venator Founders Fund Class A	CC&L All Strategies Fund
Arrow Performance Fund Class A	Waratah Income	CC&L Multi-Strategy Composite
Aventine Canadian Equity Fund	Waratah Performance	Ewing Morris Opportunities Fund LP
DKAM Capital Ideas Fund, L.P.	CC&L Q Global Equity Market Neutral (CAD)	Friedberg Asset Allocation Fund Ltd.
EHP Advantage Fund Class F	EHP Foundation Alternative Fund Class F	Lynwood Opportunities Fund Class F
EHP Select Alternative Fund Class F	PCJ Absolute Return Strategy CAD	Palos Income Fund LP Class X
Formula Growth Focus Fund Class F USD	Picton Mahoney Fortified Market Neutral Alternative Fund A	Polar Multi-Strategy Fund
Formula Growth Hedge Fund Class F USD	Picton Mahoney Market Neutral Equity Fund Class A CAD	AlphaNorth Partners Fund
Galliant Equity Long/Short Fund LP	Polar Long/Short Fund	Formula Growth Alpha Fund Class F USD
Good Opportunities Fund - F Class	Waratah One	Maxam Diversified Strategies Fund
Goodwood Fund	Algonquin Debt Strategies Fund LP	Panorama Fund LP
IBV Capital Global Value Fund	East Coast Investment Grade II Fund Class F	Rosalind Capital Partners L.P.
JC Clark Adaly Trust D	Fiera Capital Income Opportunities Fund, Class F	Stornoway Recovery Fund LP
JC Clark Focused Opportunities Fund	Guardian Strategic Income Fund Composite	Venator Alternative Income Fund Class F
JC Clark Preservation Trust Class B	Lawrence Park Credit Strategies Fund	Vertex Fund Class A
Jemekk Long/Short Fund	Ninepoint Credit Income Opportunities Class B	Vision Opportunity Fund LP
Jemekk Total Return Fund	Picton Mahoney Income Opportunities Fund Class A CAD	
JM Catalyst Fund	RP Debt Opportunities	
LionGuard Opportunities Fund	RP Select Opportunities	
Lions Bay Fund Class A	Arrow Global Advantage Fund Class F	
Ninepoint Enhanced Long Short Equity Fund Series A	Friedberg Global-Macro Hedge Fund, Ltd.	
Peregrine Fund	Perennial Equity Portfolio	
Picton Mahoney Long Short Equity Fund Class A CAD	ReSolve Asset Management Inc.	

Please send Index inquiries to: schfindex.data@scotiabank.com and direct Media inquiries to 416-933-3250.

www.qbm.scotiabank.com

IMPORTANT NOTICE AND DISCLAIMER: The Bank of Nova Scotia ("Scotiabank") calculates and publishes the Scotiabank Canadian Hedge Fund Index (the "Index") at its own expense. It is prepared solely as an information service to financial market participants and is published on a best-efforts basis. Scotiabank and/or its affiliates do not recommend, express any opinion or accept any liability regarding the constituent funds or their respective holdings by virtue of their inclusion in the Index. The data used to construct the Index is provided on a voluntary basis by the constituent funds and is not reviewed, audited or independently verified in any way by Scotiabank and/or its affiliates.

In the ordinary course of business, Scotiabank and/or its affiliates may hold or trade, for their own accounts and the accounts of their customers, funds included in the Index, or any of the securities held by funds included in the Index, and/or may have an advisory, underwriting or other relationship with a fund included in the Index. The Index is based on data believed to be reliable. No guarantee is made as to the accuracy, timeliness, or completeness of the data used in the Index. Neither Scotiabank nor its affiliates, accept liability whatsoever for any loss arising from any use of this report or its contents. In the event data input to the Index calculation is published and subsequently believed to be in error, Scotiabank may at its sole discretion declare the data error to be immaterial to the Index value, and is under no obligation to re-calculate an already published Index value. The Index construction rules, guidelines, and practices may be changed at any time at Scotiabank's sole discretion, though Scotiabank will endeavor to provide reasonable advance notice of such changes, including termination of the Index. The information included herein is not intended for use by retail clients.

TM Trademark of The Bank of Nova Scotia. Used under license, where applicable. Scotiabank, together with "Global Banking and Markets", is a marketing name for the global corporate and investment banking and capital markets businesses of The Bank of Nova Scotia and certain of its affiliates in the countries where they operate, including Scotia Capital Inc., Scotia Capital (USA) Inc., and Scotia Capital Inc. is a Member of the Canadian Investor Protection Fund. Scotia Capital (USA) Inc. is a registered broker-dealer with the SEC and is a member of FINRA, NYSE and SIPC. Scotia Capital (Europe) Limited is authorized and regulated by the Financial Services Authority.

The Scotiabank Canadian Hedge Fund Index is copyright The Bank of Nova Scotia 2020.