

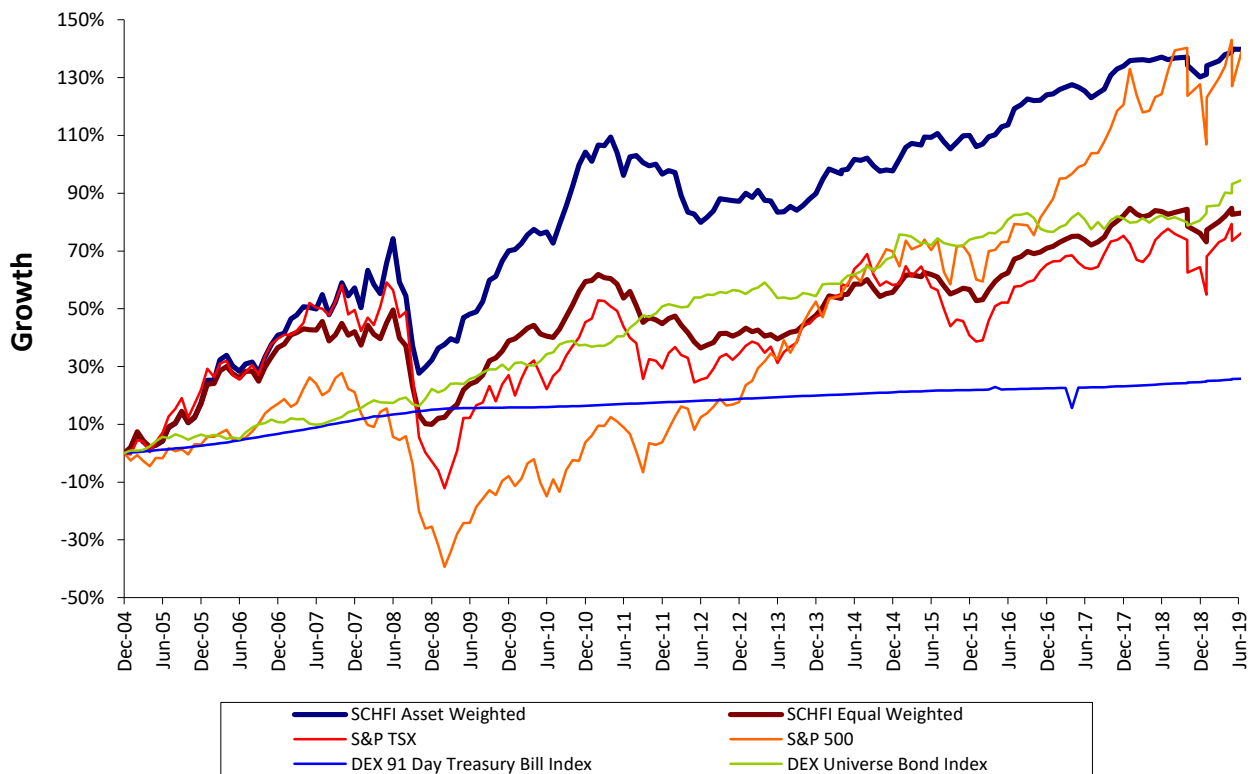


# SCOTIABANK CANADIAN HEDGE FUND PERFORMANCE INDEX OVERVIEW

The Scotiabank Canadian Hedge Fund Index ended August 2019 down -0.61% MOM on an asset weighted basis and down -0.22% MOM on an equal weighted basis.

The aim of the Scotiabank Canadian Hedge Fund Index is to provide a comprehensive overview of the Canadian Hedge Fund universe. To achieve this, index returns are calculated using both an equal weighting and an asset-based weighting of the funds. The index includes both open and closed funds with a minimum AUM of C\$15 million and at least a 12 month track record of returns, managed by Canadian-domiciled hedge fund managers.

## Historical Monthly Performance



™ Trademark of The Bank of Nova Scotia. Used under license, where applicable. Scotiabank is a marketing name for the global business banking and capital markets businesses of The Bank of Nova Scotia and certain of its affiliates in the countries where they operate, including Scotia Capital Inc. and Scotia Capital (USA) Inc., which are non-bank affiliates of The Bank of Nova Scotia and authorized users of the mark. Scotia Capital Inc. is a Member of the Canadian Investor Protection Fund. Scotia Capital (USA) Inc. is a registered broker-dealer with the SEC and is a member of FINRA, NYSE and NFA. Not all products and services are offered in all jurisdictions. Services described are available only in jurisdictions where permitted by law.



## Index Summary

*Month End Aug-19	Value	Return MoM	Return YTD	Ann. RoR**	Ann. Vol***
<b>Scotiabank Canadian Hedge Fund Index Asset Weighted</b>	<b>2,399.66</b>	<b>-0.61%</b>	<b>3.80%</b>	<b>6.04%</b>	<b>8.52%</b>
<b>Scotiabank Canadian Hedge Fund Index Equal Weighted</b>	<b>1,830.97</b>	<b>-0.22%</b>	<b>5.76%</b>	<b>4.25%</b>	<b>7.51%</b>
S&P TSX Composite	<b>16,442.07</b>	0.22%	14.80%	<b>3.84%</b>	12.56%
S&P 500 (quoted in USD)	<b>2,926.46</b>	-1.80%	16.74%	<b>5.63%</b>	13.92%
S&P 500 (CAD-adjusted)	<b>3,895.41</b>	-1.24%	13.95%	<b>6.19%</b>	11.21%
DEX 91 Day Treasury Bill Index †	<b>415.32</b>	0.14%	1.10%	<b>1.46%</b>	2.24%
DEX Universe Bond Index ‡	<b>1,137.85</b>	1.85%	8.66%	<b>4.14%</b>	3.50%

\*All returns quoted in CAD except where indicated

\*\*Compound annual returns since index inception (December 31, 2004)

\*\*\* Of monthly returns

† Formerly: Scotia Capital 91Day Treasury Bill Index

‡ Formerly: Scotia Capital Universe Bond Index



## Historical Monthly Returns

### Scotiabank Canadian Hedge Fund Index Asset Weighted

	Jan	Feb	Mar	Apr	May	Jun	Jul	Aug	Sep	Oct	Nov	Dec	YTD
<b>2005</b>	1.74%	5.01%	-2.68%	-1.85%	0.76%	1.30%	4.50%	1.39%	3.58%	-3.32%	1.58%	4.52%	<b>17.35%</b>
<b>2006</b>	6.73%	0.02%	5.65%	1.18%	-2.76%	-1.46%	2.01%	0.54%	-2.86%	4.31%	3.25%	2.31%	<b>20.05%</b>
<b>2007</b>	0.49%	3.48%	0.89%	1.95%	-0.15%	-0.37%	3.34%	-4.51%	3.03%	4.31%	-2.86%	1.83%	<b>11.61%</b>
<b>2008</b>	-4.34%	8.56%	-2.95%	-2.05%	6.86%	5.03%	-8.61%	-2.99%	-11.17%	-6.92%	1.65%	1.81%	<b>-15.94%</b>
<b>2009</b>	3.09%	1.04%	1.39%	-0.61%	5.91%	0.82%	0.50%	2.42%	4.84%	0.85%	3.24%	2.12%	<b>28.62%</b>
<b>2010</b>	0.32%	1.18%	1.78%	1.02%	-0.86%	0.42%	-2.20%	3.71%	3.58%	3.69%	3.85%	2.23%	<b>20.16%</b>
<b>2011</b>	-1.61%	2.83%	-0.09%	1.42%	-2.59%	-3.86%	3.29%	0.21%	-1.22%	-0.55%	0.27%	-1.72%	<b>-3.77%</b>
<b>2012</b>	0.65%	-0.35%	-4.06%	-2.99%	-0.41%	-1.53%	0.96%	1.21%	2.27%	-0.19%	-0.16%	-0.08%	<b>-4.73%</b>
<b>2013</b>	1.47%	-0.76%	1.26%	-1.80%	-0.08%	-2.07%	0.02%	1.07%	-0.76%	0.90%	1.20%	1.01%	<b>1.40%</b>
<b>2014</b>	2.54%	1.91%	-0.87%	0.63%	0.15%	1.73%	-0.13%	0.37%	-1.32%	-0.91%	0.19%	-0.14%	<b>4.14%</b>
<b>2015</b>	2.06%	2.04%	0.62%	-0.26%	1.36%	-0.09%	0.63%	-1.34%	-1.19%	1.09%	1.10%	0.08%	<b>6.21%</b>
<b>2016</b>	-1.84%	0.40%	1.24%	0.32%	1.35%	0.28%	2.63%	0.62%	0.92%	-0.29%	0.06%	0.85%	<b>6.68%</b>
<b>2017</b>	0.17%	0.65%	0.35%	0.42%	-0.39%	-0.62%	-1.00%	0.70%	0.63%	2.08%	0.99%	0.40%	<b>4.43%</b>
<b>2018</b>	0.84%	0.10%	0.03%	-0.14%	0.22%	0.31%	-0.38%	0.20%	0.14%	-1.20%	-1.72%	0.42%	<b>-1.19%</b>
<b>2019</b>	1.26%	0.72%	0.96%	0.33%	0.44%	-0.05%	0.70%	-0.61%					<b>3.80%</b>

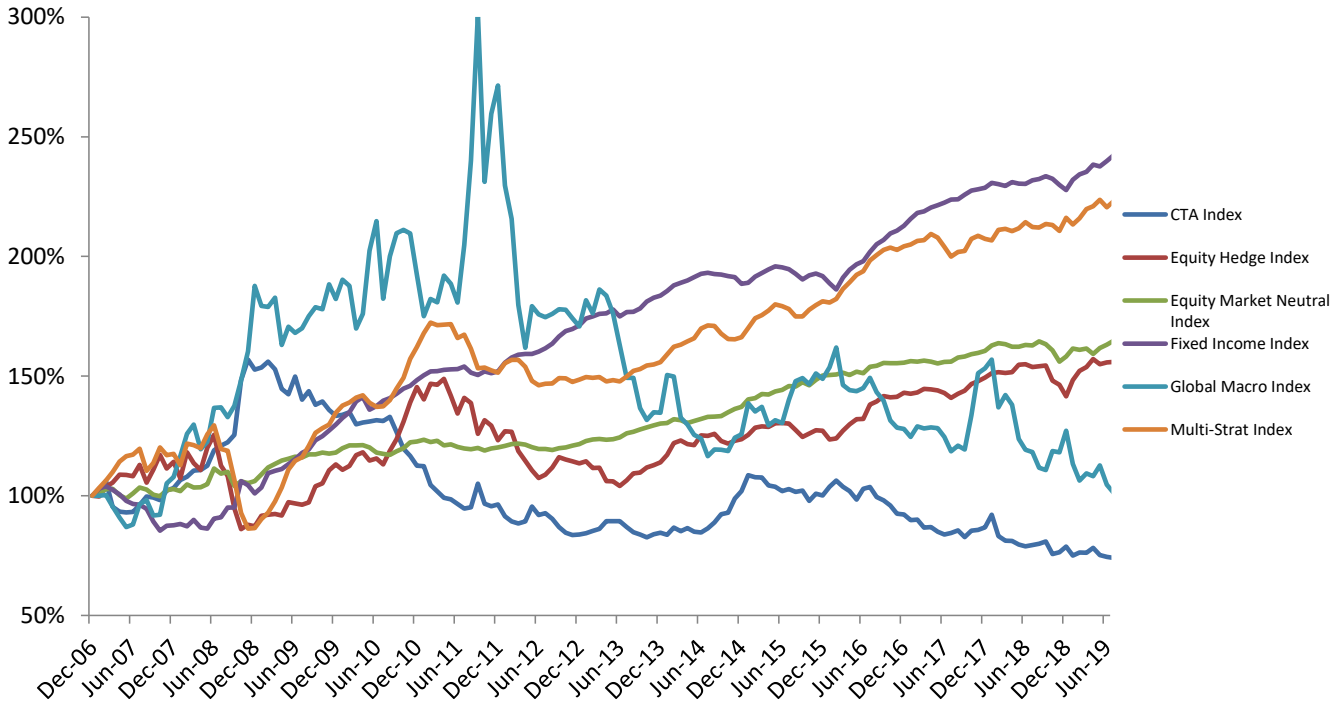
### Scotiabank Canadian Hedge Fund Index Equal Weighted

	Jan	Feb	Mar	Apr	May	Jun	Jul	Aug	Sep	Oct	Nov	Dec	YTD
<b>2005</b>	2.05%	5.32%	-2.83%	-2.18%	0.56%	1.63%	4.48%	1.36%	3.58%	-3.42%	1.68%	4.11%	<b>17.10%</b>
<b>2006</b>	5.86%	0.19%	3.44%	1.20%	-1.89%	-1.19%	1.86%	0.07%	-2.77%	3.95%	2.66%	2.45%	<b>16.62%</b>
<b>2007</b>	0.88%	2.30%	0.57%	0.91%	-0.18%	-0.11%	2.06%	-4.57%	1.47%	2.84%	-2.84%	0.92%	<b>4.07%</b>
<b>2008</b>	-3.27%	4.96%	-2.12%	-1.12%	3.98%	3.03%	-6.55%	-1.89%	-10.22%	-7.98%	-2.73%	-0.25%	<b>-22.64%</b>
<b>2009</b>	1.94%	0.28%	2.39%	1.59%	4.33%	1.64%	0.68%	1.77%	3.90%	0.77%	1.79%	2.59%	<b>26.31%</b>
<b>2010</b>	0.56%	1.24%	1.33%	0.68%	-2.02%	-0.60%	-0.33%	2.09%	2.99%	2.80%	3.05%	2.20%	<b>14.78%</b>
<b>2011</b>	0.24%	1.29%	-0.70%	-0.20%	-1.15%	-3.08%	1.57%	-3.22%	-3.81%	1.14%	-0.50%	-0.97%	<b>-9.17%</b>
<b>2012</b>	1.24%	0.59%	-2.06%	-1.86%	-2.21%	-1.56%	0.77%	0.58%	2.26%	0.12%	-0.71%	0.66%	<b>-2.28%</b>
<b>2013</b>	1.25%	-0.85%	0.39%	-1.47%	0.39%	-1.05%	0.85%	0.79%	0.27%	1.41%	1.15%	1.22%	<b>4.38%</b>
<b>2014</b>	1.89%	2.67%	-0.62%	0.84%	0.11%	2.32%	-0.06%	0.97%	-1.89%	-1.77%	0.64%	0.32%	<b>5.44%</b>
<b>2015</b>	1.89%	1.85%	0.07%	-0.40%	0.88%	-0.41%	-0.53%	-1.89%	-1.77%	0.58%	0.65%	-0.24%	<b>0.62%</b>
<b>2016</b>	-2.51%	0.27%	2.25%	1.77%	1.30%	0.57%	2.98%	0.53%	1.02%	-0.47%	0.35%	0.80%	<b>9.12%</b>
<b>2017</b>	0.39%	0.81%	0.58%	0.59%	0.03%	-0.75%	-0.98%	0.61%	0.97%	2.19%	0.96%	1.05%	<b>6.60%</b>
<b>2018</b>	1.37%	-1.05%	-0.59%	0.39%	0.88%	-0.17%	-0.54%	0.34%	0.62%	-3.18%	-1.35%	-1.74%	<b>-5.01%</b>
<b>2019</b>	2.41%	1.61%	1.01%	1.55%	-1.14%	0.33%	0.12%	-0.22%					<b>5.76%</b>

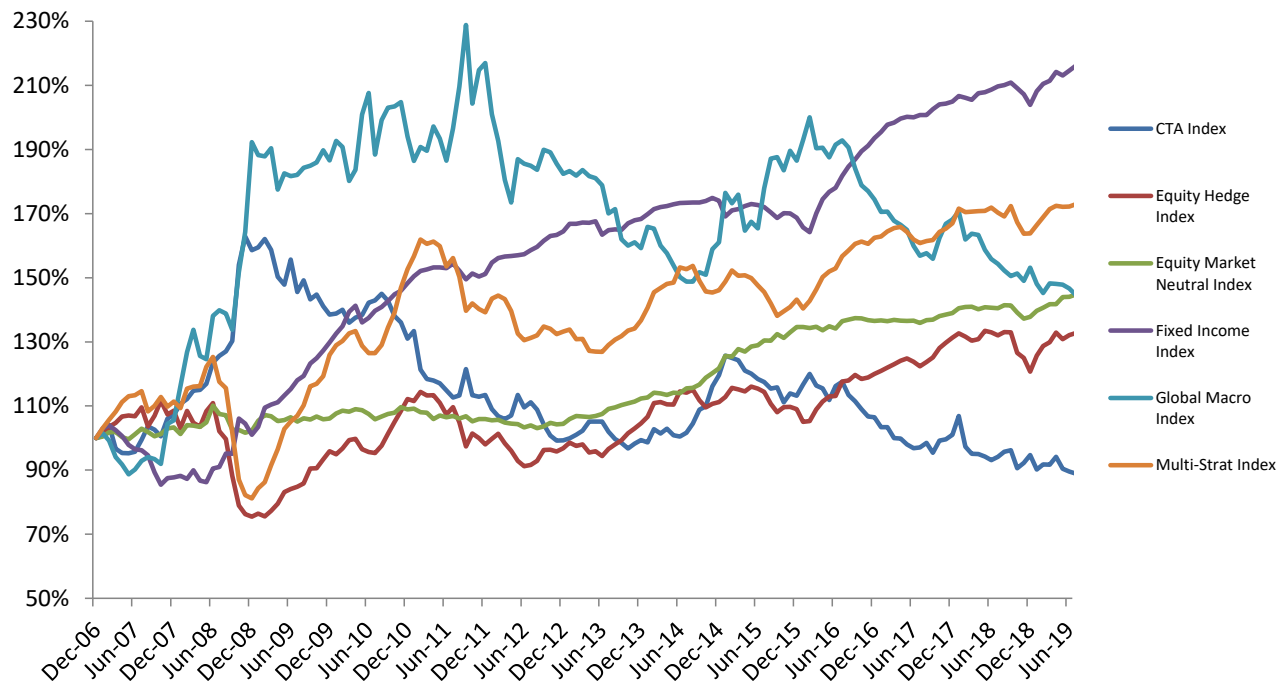


## Sub-Index Performance

### Asset Weighted



### Equal Weighted





CTA Index EW

	Jan	Feb	Mar	Apr	May	Jun	Jul	Aug	Sep	Oct	Nov	Dec	YTD
2007	0.98%	3.12%	-7.15%	-1.43%	-0.04%	0.46%	3.89%	4.19%	-0.99%	-1.96%	5.48%	1.05%	7.20%
2008	3.24%	1.33%	2.36%	0.18%	1.64%	5.70%	1.68%	1.15%	2.54%	18.17%	5.79%	-2.64%	47.93%
2009	0.55%	1.64%	-2.10%	-5.30%	-1.60%	5.26%	-6.48%	2.50%	-3.95%	1.02%	-2.53%	-1.83%	-12.66%
2010	0.20%	0.85%	-2.84%	1.13%	0.62%	2.78%	0.51%	1.44%	-1.54%	-3.30%	-1.44%	-3.72%	-5.42%
2011	1.82%	-9.04%	-2.39%	-0.43%	-0.72%	-1.90%	-1.90%	0.53%	7.29%	-6.68%	-0.44%	0.49%	-13.40%
2012	-3.93%	-1.98%	-0.86%	1.09%	5.92%	-3.37%	1.42%	-2.05%	-4.24%	-3.31%	-1.58%	0.08%	-12.48%
2013	0.66%	1.12%	1.25%	2.75%	0.00%	-0.04%	-2.97%	-2.22%	-1.20%	-1.78%	1.55%	1.11%	0.07%
2014	-0.71%	4.18%	-1.35%	1.49%	-2.00%	-0.40%	1.19%	2.80%	4.19%	0.91%	5.73%	3.00%	20.40%
2015	5.08%	-0.55%	-0.59%	-2.58%	-0.82%	-1.38%	-0.80%	-1.73%	0.33%	-4.00%	2.47%	-0.63%	-5.37%
2016	3.07%	2.84%	-3.02%	-0.77%	-3.09%	3.86%	1.16%	-3.52%	-1.76%	-2.15%	-2.09%	-0.26%	-5.94%
2017	-2.87%	-0.02%	-3.25%	-0.19%	-1.80%	-1.20%	0.22%	1.44%	-3.16%	4.02%	0.37%	1.44%	-5.13%
2018	5.79%	-8.93%	-2.31%	-0.08%	-0.78%	-1.17%	1.10%	1.69%	0.48%	-5.87%	1.87%	2.64%	-6.25%
2019	-4.73%	1.71%	-0.09%	2.73%	-4.00%	-0.98%	-0.71%	7.64%					1.04%

CTA Index AW

	Jan	Feb	Mar	Apr	May	Jun	Jul	Aug	Sep	Oct	Nov	Dec	YTD
2007	1.58%	4.57%	-10.13%	-2.15%	-0.44%	0.31%	3.10%	3.72%	-0.48%	-1.09%	4.10%	1.00%	3.24%
2008	3.24%	1.33%	2.36%	0.18%	1.64%	5.70%	1.68%	1.15%	2.54%	18.17%	5.79%	-2.64%	47.93%
2009	0.55%	1.64%	-2.10%	-5.30%	-1.60%	5.26%	-6.48%	2.50%	-3.95%	1.02%	-2.53%	-1.83%	-12.66%
2010	0.36%	0.78%	-3.76%	0.58%	0.35%	0.41%	-0.24%	1.34%	-4.78%	-5.50%	-2.52%	-3.50%	-15.59%
2011	-0.20%	-7.00%	-2.51%	-2.71%	-0.61%	-1.92%	-2.07%	0.60%	10.34%	-7.91%	-1.15%	0.85%	-14.36%
2012	-5.20%	-2.34%	-0.99%	0.98%	7.05%	-3.72%	0.76%	-2.47%	-3.89%	-2.64%	-1.11%	0.19%	-13.08%
2013	0.62%	1.14%	1.06%	3.70%	-0.02%	0.08%	-2.82%	-2.42%	-1.18%	-1.42%	1.65%	0.72%	0.91%
2014	-1.01%	3.64%	-1.74%	1.40%	-1.71%	-0.30%	1.95%	2.88%	3.90%	0.62%	6.37%	3.22%	20.60%
2015	6.51%	-0.80%	-0.16%	-3.02%	-0.52%	-1.78%	0.86%	-1.15%	0.47%	-4.15%	3.04%	-0.68%	-1.79%
2016	3.56%	2.52%	-2.44%	-1.72%	-3.52%	4.59%	0.79%	-4.05%	-1.39%	-2.29%	-3.58%	-0.30%	-7.98%
2017	-2.61%	0.31%	-3.66%	0.21%	-2.21%	-1.37%	0.74%	1.22%	-3.28%	3.33%	0.36%	1.21%	-5.84%
2018	6.02%	-9.67%	-2.32%	-0.02%	-1.89%	-1.01%	0.69%	0.66%	1.27%	-6.55%	1.00%	3.10%	-9.27%
2019	-4.77%	1.68%	-0.10%	2.75%	-3.92%	-0.93%	-0.57%	7.57%					1.20%

Equity Hedge Index EW

	Jan	Feb	Mar	Apr	May	Jun	Jul	Aug	Sep	Oct	Nov	Dec	YTD
2007	0.67%	2.78%	1.23%	1.85%	0.35%	-0.25%	2.60%	-5.42%	3.22%	4.37%	-3.85%	1.14%	8.56%
2008	-5.07%	5.24%	-3.45%	-1.11%	4.69%	2.29%	-7.93%	-2.35%	-11.53%	-10.48%	-3.42%	-1.05%	-30.50%
2009	1.30%	-1.11%	2.23%	2.88%	4.56%	1.18%	0.79%	1.29%	5.38%	0.07%	3.13%	2.70%	27.10%
2010	-1.00%	1.87%	2.71%	0.42%	-3.23%	-0.93%	-0.36%	2.44%	3.78%	3.70%	3.23%	3.39%	16.93%
2011	-0.52%	2.56%	-0.98%	0.08%	-2.14%	-3.25%	2.17%	-4.38%	-7.15%	4.19%	-1.42%	-2.02%	-12.62%
2012	1.77%	1.62%	-3.00%	-2.27%	-3.34%	-1.81%	0.51%	1.38%	3.59%	0.12%	-0.54%	1.01%	-1.21%
2013	1.80%	-1.05%	0.48%	-2.51%	0.40%	-1.59%	2.32%	1.50%	1.29%	2.26%	1.46%	1.53%	8.05%
2014	1.97%	3.97%	0.32%	-0.62%	-0.14%	3.76%	-0.37%	0.88%	-2.89%	-1.98%	1.00%	0.47%	6.32%
2015	1.44%	2.49%	-0.40%	-0.51%	1.26%	-0.53%	-0.89%	-3.26%	-2.35%	1.51%	0.05%	-0.64%	-1.95%
2016	-3.62%	0.20%	3.43%	2.28%	1.44%	0.14%	3.94%	0.30%	1.47%	-1.09%	0.44%	0.87%	10.03%
2017	0.81%	0.84%	0.86%	0.91%	0.59%	-0.85%	-1.17%	1.12%	1.13%	2.33%	1.32%	1.22%	9.45%
2018	1.03%	-0.77%	-0.98%	0.37%	2.00%	-0.37%	-0.69%	0.74%	-0.04%	-4.80%	-1.26%	-3.45%	-8.09%
2019	4.13%	2.44%	0.88%	2.34%	-1.57%	0.96%	0.47%	-0.82%					9.06%

Equity Hedge Index AW

	Jan	Feb	Mar	Apr	May	Jun	Jul	Aug	Sep	Oct	Nov	Dec	YTD
2007	-0.33%	4.15%	1.65%	3.09%	-0.02%	-0.57%	4.38%	-6.50%	5.03%	5.62%	-4.82%	2.46%	14.18%
2008	-5.96%	10.01%	-3.81%	-2.52%	8.46%	4.48%	-10.32%	-3.79%	-12.46%	-9.24%	2.15%	-0.68%	-23.56%
2009	4.99%	0.45%	0.42%	-0.68%	6.09%	-0.64%	-0.56%	1.02%	7.02%	1.12%	5.15%	2.30%	29.65%
2010	-1.99%	1.45%	4.02%	0.94%	-2.88%	0.78%	-2.15%	5.03%	4.10%	5.85%	6.16%	4.64%	28.54%
2011	-3.57%	4.65%	-0.26%	1.66%	-4.74%	-5.24%	4.89%	-1.52%	-9.31%	4.60%	-1.77%	-4.74%	-15.32%
2012	3.07%	-0.18%	-6.35%	-3.39%	-3.51%	-2.86%	1.23%	2.84%	3.85%	-0.91%	-0.64%	-0.69%	-7.78%
2013	0.69%	-2.39%	0.09%	-5.02%	-0.09%	-1.86%	2.28%	2.72%	0.31%	1.94%	0.92%	1.06%	0.39%
2014	2.65%	4.23%	0.88%	-1.17%	-0.37%	3.35%	-0.18%	0.70%	-2.38%	-0.89%	0.98%	0.48%	8.39%
2015	1.56%	2.36%	0.44%	-0.19%	1.20%	0.01%	-0.15%	-2.04%	-2.25%	1.12%	1.05%	-0.10%	2.94%
2016	-2.86%	0.28%	2.65%	2.14%	1.57%	0.11%	4.57%	0.96%	1.55%	-0.36%	0.14%	1.20%	12.42%
2017	-0.29%	0.37%	1.09%	-0.15%	-0.27%	-0.79%	-1.38%	1.19%	0.94%	1.91%	0.84%	0.96%	4.43%
2018	1.24%	0.32%	-0.25%	0.22%	2.09%	0.11%	-0.80%	0.26%	0.18%	-4.07%	-1.19%	-3.26%	-5.19%
2019	4.77%	2.59%	1.08%	2.14%	-1.38%	0.50%	0.16%	-0.09%					10.05%



**Equity Market Neutral Index EW**

	Jan	Feb	Mar	Apr	May	Jun	Jul	Aug	Sep	Oct	Nov	Dec	YTD
<b>2007</b>	0.43%	1.36%	0.11%	-1.59%	-0.70%	1.57%	1.76%	-1.02%	-1.28%	0.67%	1.74%	0.32%	<b>3.34%</b>
<b>2008</b>	-2.03%	2.74%	-0.13%	-0.38%	1.35%	5.00%	-2.38%	-0.35%	-4.19%	-0.14%	-0.81%	0.64%	<b>-1.00%</b>
<b>2009</b>	2.96%	1.77%	-0.35%	-1.42%	0.25%	0.85%	-1.26%	1.01%	-0.43%	0.95%	-0.84%	0.22%	<b>3.68%</b>
<b>2010</b>	1.51%	0.80%	-0.31%	0.75%	-0.29%	-1.09%	-1.59%	0.87%	0.74%	0.31%	1.63%	-0.63%	<b>2.70%</b>
<b>2011</b>	0.20%	-1.01%	-0.11%	-1.84%	1.04%	-0.55%	0.35%	-0.71%	0.66%	-1.47%	0.65%	0.06%	<b>-2.74%</b>
<b>2012</b>	-0.38%	0.11%	-0.79%	-0.29%	-0.18%	-1.02%	0.64%	-0.83%	0.49%	1.10%	-0.43%	0.11%	<b>-1.47%</b>
<b>2013</b>	1.49%	0.88%	-0.15%	-0.15%	0.25%	0.63%	1.44%	0.43%	0.70%	0.49%	0.51%	0.83%	<b>7.60%</b>
<b>2014</b>	0.28%	1.34%	-0.22%	-0.43%	0.64%	-0.12%	1.29%	0.12%	0.90%	1.83%	1.22%	1.26%	<b>8.39%</b>
<b>2015</b>	3.19%	-0.19%	1.87%	-0.61%	1.25%	0.31%	1.17%	-0.06%	1.58%	-0.93%	1.38%	1.22%	<b>10.57%</b>
<b>2016</b>	0.01%	-0.25%	0.31%	-0.84%	0.94%	-0.50%	1.67%	0.37%	0.35%	-0.07%	-0.37%	-0.18%	<b>1.44%</b>
<b>2017</b>	0.11%	-0.18%	0.26%	-0.17%	-0.04%	0.07%	-0.56%	0.65%	0.12%	0.84%	0.34%	0.31%	<b>1.76%</b>
<b>2018</b>	1.12%	0.24%	0.07%	-0.55%	0.43%	-0.10%	-0.09%	0.66%	-0.03%	-1.61%	-1.35%	0.41%	<b>-0.84%</b>
<b>2019</b>	1.37%	0.70%	0.75%	0.02%	1.59%	0.04%	0.51%	0.26%					<b>5.35%</b>

**Equity Market Neutral Index AW**

	Jan	Feb	Mar	Apr	May	Jun	Jul	Aug	Sep	Oct	Nov	Dec	YTD
<b>2007</b>	1.01%	1.78%	0.13%	-2.61%	-1.45%	2.24%	2.45%	-0.87%	-2.08%	-0.61%	2.59%	0.42%	<b>2.86%</b>
<b>2008</b>	-0.89%	2.74%	-1.21%	0.09%	1.25%	6.25%	-1.90%	0.60%	-5.34%	1.86%	-0.72%	0.83%	<b>3.19%</b>
<b>2009</b>	2.58%	2.71%	1.37%	1.24%	0.57%	0.75%	-0.24%	1.12%	0.03%	0.64%	-0.42%	0.43%	<b>11.26%</b>
<b>2010</b>	1.47%	1.01%	0.05%	0.03%	-0.73%	-1.81%	-0.47%	-0.32%	1.25%	1.06%	2.12%	0.21%	<b>3.86%</b>
<b>2011</b>	0.67%	-0.83%	0.45%	-1.62%	0.40%	-0.91%	-0.47%	-0.33%	0.46%	-0.87%	0.68%	0.43%	<b>-1.96%</b>
<b>2012</b>	0.50%	0.62%	0.13%	-0.31%	-0.86%	-0.60%	-0.04%	-0.37%	0.66%	0.29%	0.60%	0.54%	<b>1.14%</b>
<b>2013</b>	1.07%	0.52%	0.17%	-0.26%	0.18%	0.56%	1.39%	0.51%	0.81%	0.62%	0.71%	0.58%	<b>7.06%</b>
<b>2014</b>	0.11%	1.28%	-0.34%	-0.89%	0.62%	0.68%	0.69%	0.07%	0.18%	1.21%	0.97%	0.67%	<b>5.35%</b>
<b>2015</b>	2.23%	0.39%	1.26%	-0.19%	0.93%	0.45%	1.08%	-0.13%	1.26%	-0.84%	1.48%	1.27%	<b>9.55%</b>
<b>2016</b>	0.10%	0.18%	0.50%	-0.68%	0.92%	-0.39%	1.75%	0.32%	0.74%	-0.05%	-0.04%	0.16%	<b>3.55%</b>
<b>2017</b>	0.42%	-0.12%	0.26%	-0.30%	-0.45%	0.38%	0.12%	1.10%	0.24%	0.64%	0.32%	0.52%	<b>3.15%</b>
<b>2018</b>	1.43%	0.59%	-0.23%	-0.72%	0.03%	0.50%	-0.14%	1.00%	-0.66%	-1.57%	-2.96%	1.35%	<b>-1.46%</b>
<b>2019</b>	2.11%	-0.35%	0.37%	-1.40%	1.58%	0.83%	1.01%	-2.23%					<b>1.86%</b>

**Fixed Income Index EW**

	Jan	Feb	Mar	Apr	May	Jun	Jul	Aug	Sep	Oct	Nov	Dec	YTD
<b>2007</b>	2.99%	0.93%	-1.46%	-1.80%	-2.71%	-1.35%	-0.32%	-1.69%	-5.60%	-4.34%	2.44%	0.24%	<b>-12.27%</b>
<b>2008</b>	0.54%	-1.04%	3.08%	-3.59%	-0.54%	4.90%	0.53%	4.58%	-0.03%	11.56%	-1.53%	-3.31%	<b>15.15%</b>
<b>2009</b>	2.42%	5.81%	0.90%	0.65%	1.88%	1.78%	2.35%	1.19%	3.21%	1.38%	1.91%	1.93%	<b>28.46%</b>
<b>2010</b>	2.14%	1.77%	3.35%	1.32%	-3.70%	1.05%	1.65%	0.81%	1.28%	1.50%	0.79%	1.65%	<b>14.32%</b>
<b>2011</b>	1.41%	1.13%	0.31%	0.37%	0.02%	-0.15%	0.92%	-1.42%	-1.79%	1.22%	-0.61%	0.52%	<b>1.90%</b>
<b>2012</b>	2.35%	0.91%	0.31%	0.11%	0.12%	0.22%	0.80%	0.68%	1.15%	0.96%	0.20%	0.67%	<b>8.79%</b>
<b>2013</b>	1.44%	0.00%	0.24%	-0.05%	0.27%	-2.48%	0.88%	0.14%	-0.10%	1.22%	0.59%	0.23%	<b>2.36%</b>
<b>2014</b>	0.87%	0.96%	0.35%	0.17%	0.35%	0.20%	0.05%	0.05%	0.03%	0.25%	0.55%	-0.49%	<b>3.38%</b>
<b>2015</b>	-2.83%	1.11%	0.26%	0.55%	0.35%	-0.18%	-0.38%	-0.97%	-0.99%	0.85%	-0.02%	-0.79%	<b>-3.04%</b>
<b>2016</b>	-1.78%	-0.89%	3.54%	2.58%	1.32%	0.72%	2.10%	1.60%	1.19%	1.35%	0.93%	1.24%	<b>14.71%</b>
<b>2017</b>	0.98%	1.16%	0.34%	0.64%	0.25%	-0.04%	0.34%	0.01%	0.89%	0.73%	0.14%	0.30%	<b>5.89%</b>
<b>2018</b>	0.85%	-0.26%	-0.32%	1.01%	0.15%	0.39%	0.48%	0.17%	0.39%	-0.82%	-0.92%	-1.60%	<b>-0.51%</b>
<b>2019</b>	2.12%	1.11%	0.45%	1.28%	-0.52%	0.70%	0.73%	-0.50%					<b>5.46%</b>

**Fixed Income Index AW**

	Jan	Feb	Mar	Apr	May	Jun	Jul	Aug	Sep	Oct	Nov	Dec	YTD
<b>2007</b>	2.99%	0.93%	-1.46%	-1.80%	-2.71%	-1.35%	-0.32%	-1.69%	-5.60%	-4.34%	2.44%	0.24%	<b>-12.27%</b>
<b>2008</b>	0.54%	-1.04%	3.08%	-3.59%	-0.54%	4.90%	0.53%	4.58%	-0.03%	11.56%	-1.53%	-3.31%	<b>15.15%</b>
<b>2009</b>	2.42%	5.81%	0.90%	0.65%	1.88%	1.78%	2.35%	1.19%	3.21%	1.38%	1.91%	1.93%	<b>28.46%</b>
<b>2010</b>	2.14%	1.77%	3.35%	1.32%	-3.70%	1.05%	1.65%	0.81%	1.28%	1.50%	0.79%	1.65%	<b>14.32%</b>
<b>2011</b>	1.37%	1.08%	0.05%	0.38%	0.11%	0.09%	0.66%	-1.63%	-0.66%	1.03%	-0.51%	0.48%	<b>2.44%</b>
<b>2012</b>	2.37%	1.45%	0.73%	0.15%	0.04%	0.59%	0.91%	1.14%	1.88%	1.35%	0.50%	0.91%	<b>12.67%</b>
<b>2013</b>	1.66%	0.47%	0.64%	0.10%	0.93%	-1.59%	1.03%	0.04%	0.79%	1.61%	0.92%	0.47%	<b>7.26%</b>
<b>2014</b>	1.07%	1.24%	0.59%	0.48%	0.76%	0.72%	0.25%	-0.26%	-0.15%	-0.34%	-0.22%	-1.43%	<b>2.70%</b>
<b>2015</b>	0.21%	1.38%	0.79%	0.78%	0.63%	-0.22%	-0.39%	-0.95%	-1.27%	0.91%	0.39%	-0.51%	<b>1.72%</b>
<b>2016</b>	-1.59%	-1.36%	2.65%	1.75%	1.13%	0.69%	1.93%	1.59%	0.89%	1.28%	0.61%	0.96%	<b>10.96%</b>
<b>2017</b>	1.34%	1.17%	0.28%	0.75%	0.43%	0.46%	0.62%	0.02%	0.85%	0.79%	0.24%	0.25%	<b>7.43%</b>
<b>2018</b>	0.89%	-0.20%	-0.32%	0.68%	-0.29%	-0.03%	0.66%	0.25%	0.50%	-0.48%	-1.10%	-0.91%	<b>-0.40%</b>
<b>2019</b>	1.86%	0.97%	0.49%	1.25%	-0.29%	0.94%	0.97%	-0.48%					<b>5.83%</b>



Global Macro Index EW

	Jan	Feb	Mar	Apr	May	Jun	Jul	Aug	Sep	Oct	Nov	Dec	YTD
2007	1.49%	-2.26%	-5.17%	-2.43%	-3.42%	1.71%	2.98%	1.30%	-0.71%	-1.55%	13.60%	1.03%	5.51%
2008	10.12%	9.16%	5.45%	-6.10%	-0.82%	10.87%	1.25%	-0.71%	-3.67%	13.49%	8.23%	17.04%	82.22%
2009	-2.11%	-0.21%	1.35%	-6.77%	2.84%	-0.45%	0.20%	1.24%	0.32%	0.57%	2.04%	-1.67%	-2.95%
2010	3.25%	-1.00%	-5.56%	1.94%	9.42%	3.33%	-9.23%	5.68%	1.97%	0.19%	0.64%	-5.23%	3.98%
2011	-3.94%	2.34%	-0.63%	4.03%	-1.95%	-3.56%	5.39%	6.67%	9.16%	-10.70%	5.10%	1.03%	11.82%
2012	-7.37%	-4.12%	-6.35%	-3.90%	7.81%	-0.76%	-0.33%	-0.70%	3.43%	-0.45%	-1.86%	-1.73%	-15.95%
2013	0.50%	-0.79%	0.95%	-1.02%	-0.37%	-1.19%	-4.92%	0.77%	-5.48%	-1.23%	0.67%	-1.16%	-12.70%
2014	4.16%	-0.32%	-3.22%	-1.44%	-2.41%	-2.40%	-0.92%	-0.02%	1.96%	-0.48%	5.27%	1.37%	1.17%
2015	9.53%	-1.82%	1.56%	-6.37%	1.65%	-1.24%	7.56%	5.23%	0.25%	-2.22%	3.34%	-1.65%	15.76%
2016	3.46%	3.69%	-4.82%	0.08%	-1.58%	2.11%	0.70%	-1.14%	-3.45%	-2.85%	-0.99%	-1.50%	-6.49%
2017	-2.20%	0.06%	-1.67%	-0.76%	-0.96%	-3.02%	-1.95%	0.54%	-1.11%	4.16%	2.73%	0.79%	-3.56%
2018	1.44%	-5.06%	1.11%	-0.25%	-2.84%	-1.83%	-0.96%	-1.32%	-1.16%	0.51%	-1.50%	2.77%	-8.93%
2019	-3.30%	-1.92%	2.05%	-0.07%	-0.20%	-0.80%	-1.31%	2.69%					-2.97%

Global Macro Index AW

	Jan	Feb	Mar	Apr	May	Jun	Jul	Aug	Sep	Oct	Nov	Dec	YTD
2007	0.05%	0.24%	-4.79%	-4.85%	-4.35%	1.29%	9.64%	1.73%	-6.55%	0.41%	14.18%	2.55%	7.87%
2008	8.04%	8.02%	3.05%	-7.93%	2.62%	11.58%	0.17%	-3.05%	3.60%	7.70%	8.23%	17.04%	74.03%
2009	-4.45%	-0.27%	2.16%	-10.81%	4.67%	-1.52%	1.19%	2.96%	2.16%	-0.53%	5.88%	-3.25%	-2.92%
2010	4.39%	-1.34%	-9.48%	3.59%	14.99%	6.11%	-15.11%	9.77%	4.81%	0.64%	-0.69%	-8.26%	5.52%
2011	-8.99%	4.11%	-0.73%	6.16%	-1.80%	-4.18%	13.35%	17.23%	25.51%	-23.30%	12.31%	4.55%	41.12%
2012	-15.37%	-6.09%	-16.64%	-9.97%	10.74%	-1.90%	-0.69%	0.81%	1.08%	-0.10%	-2.01%	-1.97%	-37.07%
2013	6.41%	-3.01%	5.64%	-1.39%	-4.07%	-7.52%	-8.34%	0.01%	-8.50%	-3.59%	2.42%	-0.17%	-21.14%
2014	11.76%	-0.48%	-11.45%	-2.19%	-3.32%	-1.14%	-6.03%	2.41%	-0.04%	-0.44%	4.68%	1.08%	-6.71%
2015	10.37%	-2.49%	1.46%	-5.64%	1.68%	-0.95%	7.41%	5.62%	0.84%	-1.69%	3.08%	-1.48%	18.51%
2016	3.23%	5.34%	-9.67%	-1.46%	-0.30%	0.91%	2.99%	-4.04%	-2.50%	-5.87%	-2.34%	-0.37%	-14.07%
2017	-2.61%	3.48%	-0.59%	0.34%	-0.29%	-2.85%	-4.80%	1.92%	-1.28%	12.00%	13.14%	1.32%	19.75%
2018	2.39%	-12.72%	3.74%	-2.86%	-10.31%	-3.63%	-0.85%	-5.56%	-0.82%	7.20%	-0.45%	7.60%	-17.00%
2019	-10.92%	-6.14%	2.84%	-1.04%	4.17%	-7.18%	-3.20%	6.51%					-15.17%

Multi-Strat Index EW

	Jan	Feb	Mar	Apr	May	Jun	Jul	Aug	Sep	Oct	Nov	Dec	YTD
2007	3.07%	2.51%	2.43%	2.73%	1.69%	0.28%	1.07%	-5.49%	1.59%	2.55%	-2.65%	1.41%	11.38%
2008	-1.83%	5.54%	0.54%	0.16%	5.19%	2.52%	-6.23%	-1.65%	-11.95%	-14.49%	-5.56%	-1.25%	-27.14%
2009	3.92%	2.24%	6.14%	5.45%	6.55%	2.22%	1.79%	3.02%	5.38%	0.67%	2.04%	5.58%	55.23%
2010	2.35%	1.03%	1.85%	0.52%	-3.43%	-1.80%	0.03%	2.00%	4.26%	3.43%	5.57%	3.93%	21.17%
2011	2.65%	3.34%	-0.84%	0.45%	-0.86%	-3.97%	1.71%	-3.76%	-7.07%	1.63%	-1.19%	-0.74%	-8.79%
2012	3.06%	0.68%	-0.80%	-2.55%	-5.06%	-1.55%	0.55%	0.57%	2.11%	-0.54%	-1.19%	0.59%	-4.30%
2013	0.45%	-2.28%	0.07%	-2.85%	-0.14%	-0.09%	1.69%	1.32%	0.84%	1.30%	0.48%	1.86%	2.57%
2014	2.91%	3.44%	0.89%	0.90%	0.24%	3.21%	-0.37%	0.67%	-3.02%	-2.24%	-0.18%	0.44%	6.87%
2015	1.86%	2.35%	-1.07%	0.08%	-0.59%	-1.53%	-1.38%	-2.42%	-2.73%	1.04%	0.96%	1.59%	-2.00%
2016	-1.93%	1.67%	2.50%	2.68%	1.11%	0.65%	2.49%	1.12%	1.34%	0.43%	-0.43%	1.19%	13.51%
2017	0.20%	1.00%	0.62%	0.26%	-0.96%	-1.44%	-0.71%	0.42%	0.16%	1.57%	0.66%	0.99%	2.76%
2018	2.75%	-0.66%	0.09%	0.09%	0.05%	0.61%	-0.92%	-0.70%	1.90%	-2.93%	-2.11%	0.06%	-1.88%
2019	1.59%	1.46%	1.51%	0.57%	-0.15%	0.01%	0.42%	-1.07%					4.38%

Multi-Strat Index AW

	Jan	Feb	Mar	Apr	May	Jun	Jul	Aug	Sep	Oct	Nov	Dec	YTD
2007	3.33%	2.89%	3.38%	4.02%	1.94%	0.53%	2.19%	-7.71%	2.88%	5.77%	-2.75%	0.52%	17.54%
2008	-4.07%	8.06%	-0.56%	-1.09%	4.89%	2.97%	-7.61%	-0.61%	-10.26%	-12.95%	-7.01%	0.15%	-26.44%
2009	4.40%	2.93%	5.14%	5.88%	7.32%	3.21%	1.38%	4.01%	4.57%	1.54%	1.13%	3.86%	55.83%
2010	2.22%	0.89%	1.52%	0.64%	-2.16%	-1.24%	0.14%	1.86%	3.43%	3.14%	5.35%	3.12%	20.35%
2011	3.56%	2.61%	-0.63%	0.14%	0.14%	-3.37%	0.83%	-3.52%	-5.05%	0.21%	-0.78%	-0.65%	-6.63%
2012	2.68%	0.84%	-0.01%	-1.81%	-3.85%	-1.23%	0.42%	0.07%	1.58%	-0.10%	-1.03%	0.68%	-1.89%
2013	0.72%	-0.25%	0.22%	-1.18%	0.33%	-0.32%	1.39%	1.55%	0.49%	1.01%	0.27%	0.63%	4.94%
2014	2.02%	2.06%	0.50%	0.90%	0.74%	2.47%	0.79%	-0.15%	-1.89%	-1.36%	-0.02%	0.53%	6.68%
2015	2.32%	2.35%	0.73%	1.11%	1.48%	-0.43%	-0.64%	-1.78%	0.01%	1.57%	1.09%	0.95%	9.04%
2016	-0.32%	0.82%	2.32%	1.50%	1.63%	0.76%	2.33%	1.15%	1.05%	0.49%	-0.47%	0.73%	12.63%
2017	0.36%	0.76%	0.14%	1.26%	-0.71%	-1.87%	-2.00%	0.95%	0.22%	2.49%	0.61%	-0.60%	1.54%
2018	-0.34%	2.15%	0.19%	-0.45%	0.55%	1.24%	-0.99%	-0.07%	0.70%	-0.21%	-1.16%	2.62%	4.24%
2019	-1.28%	1.20%	1.80%	0.50%	1.22%	-1.37%	1.12%	0.01%					3.20%



## Funds Included:

Arrow Capital Management, Inc.	Friedberg Global-Macro Hedge Fund, Ltd.	Picton Mahoney Fortified Market Neutral Alternative Fund A
Algonquin Debt Strategies Fund LP	Galliant Equity Long/Short Fund LP	Picton Mahoney Global Long Short Equity Fund Class A CAD
AlphaNorth Partners Fund	Good Opportunities Fund - F Class	Picton Mahoney Global Market Neutral Equity Fund Class A CAD
Amethyst Arbitrage Fund (CAD)	Goodwood Fund	Picton Mahoney Income Opportunities Fund Class A CAD
Arrow Global Advantage Fund Class F	Guardian Strategic Income Fund Composite	Picton Mahoney Long Short Equity Fund Class A CAD
Arrow Performance Fund Class A	IBV Capital Global Value Fund	Polar Long/Short Fund
Auspice Capital Advisors Ltd	JC Clark Adaly Trust D	Polar Multi-Strategy Fund
Aventine Canadian Equity Fund	JC Clark Canadian Value Fund (Class D)	Primevestfund
BT Global Growth Fund LP	JC Clark Focused Opportunities Fund	ReSolve Asset Management Inc.
CC&L All Strategies Fund	JC Clark Preservation Trust Class B	Rosalind Capital Partners L.P.
CC&L Multi-Strategy Composite	Jemekk Long/Short Fund	RP Debt Opportunities
CC&L Q Global Equity Market Neutral (CAD)	Jemekk Total Return Fund	RP Select Opportunities
Curvature Fund LP	JM Catalyst Fund	Stornoway Recovery Fund LP
DKAM Capital Ideas Fund, L.P.	Lawrence Park Credit Strategies Fund	Vantage Protected Performance Fund
East Coast Investment Grade II Fund Class F	LionGuard Opportunities Fund LP	Venator Founders Fund Class A
EHP Advantage Fund Class F	Lions Bay Fund Class A	Venator Income Fund Class F
EHP Foundation Alternative Fund Class F	Lynwood Opportunities Fund Class F	Vertex Fund Class A
EHP Select Alternative Fund Class F	Maxam Diversified Strategies Fund	Vision Opportunity Fund LP
Ewing Morris Opportunities Fund LP	Ninepoint Credit Income Opportunities Class B	Waratah Income
Fiera Capital Income Opportunities Fund, Class F	Ninepoint Enhanced Long Short Equity Fund Series A	Waratah One
Formula Growth Alpha Fund Class F (US\$)	Palos Income Fund LP Class X	Waratah Performance
Formula Growth Focus Fund Class F USD	Panorama Fund LP	
Formula Growth Global Opportunities Fund Class F USD	PCJ Absolute Return Strategy CAD	
Formula Growth Hedge Fund	Peregrine Fund	
Friedberg Asset Allocation Fund Ltd.	Perennial Equity Portfolio	

Please send Index inquiries to: [schfindex.data@scotiabank.com](mailto:schfindex.data@scotiabank.com) and direct Media inquiries to 416-933-3250.

[www.qbm.scotiabank.com](http://www.qbm.scotiabank.com)

**IMPORTANT NOTICE AND DISCLAIMER:** The Bank of Nova Scotia ("Scotiabank") calculates and publishes the Scotiabank Canadian Hedge Fund Index (the "Index") at its own expense. It is prepared solely as an information service to financial market participants and is published on a best-efforts basis. Scotiabank and/or its affiliates do not recommend, express any opinion or accept any liability regarding the constituent funds or their respective holdings by virtue of their inclusion in the Index. The data used to construct the Index is provided on a voluntary basis by the constituent funds and is not reviewed, audited or independently verified in any way by Scotiabank and/or its affiliates.

In the ordinary course of business, Scotiabank and/or its affiliates may hold or trade, for their own accounts and the accounts of their customers, funds included in the Index, or any of the securities held by funds included in the Index, and/or may have an advisory, underwriting or other relationship with a fund included in the Index. The Index is based on data believed to be reliable. No guarantee is made as to the accuracy, timeliness, or completeness of the data used in the Index. Neither Scotiabank nor its affiliates, accept liability whatsoever for any loss arising from any use of this report or its contents. In the event data input to the Index calculation is published and subsequently believed to be in error, Scotiabank may at its sole discretion declare the data error to be immaterial to the Index value, and is under no obligation to re-calculate an already published Index value. The Index construction rules, guidelines, and practices may be changed at any time at Scotiabank's sole discretion, though Scotiabank will endeavor to provide reasonable advance notice of such changes, including termination of the Index. The information included herein is not intended for use by retail clients.

<sup>TM</sup> Trademark of The Bank of Nova Scotia. Used under license, where applicable. Scotiabank, together with "Global Banking and Markets", is a marketing name for the global corporate and investment banking and capital markets businesses of The Bank of Nova Scotia and certain of its affiliates in the countries where they operate, including Scotia Capital Inc., Scotia Capital (USA) Inc., and Scotia Capital Inc. is a Member of the Canadian Investor Protection Fund. Scotia Capital (USA) Inc. is a registered broker-dealer with the SEC and is a member of FINRA, NYSE and SIPC. Scotia Capital (Europe) Limited is authorized and regulated by the Financial Services Authority.

The Scotiabank Canadian Hedge Fund Index is copyright The Bank of Nova Scotia 2019.