



SCOTIABANK CANADIAN HEDGE FUND INDEX

The Scotiabank Canadian Hedge Fund Index ended June 2022, down -0.89% MOM on an asset-weighted basis and down -3.95% MOM on an equal-weighted basis.

The Scotiabank Canadian Hedge Fund Index provides a comprehensive overview of the Canadian Hedge Fund universe. Returns are calculated using an equal-weighting and an asset-based weighting of the funds. The index includes open and closed funds with a minimum AUM of C\$15 million and a 12-month track record, that are managed by Canadian-domiciled managers.

*Please be advised that we have discontinued publication of the Global Macro Sub-Index as there was only a single fund remaining in that category which was skewing the performance metrics.

Index Summary

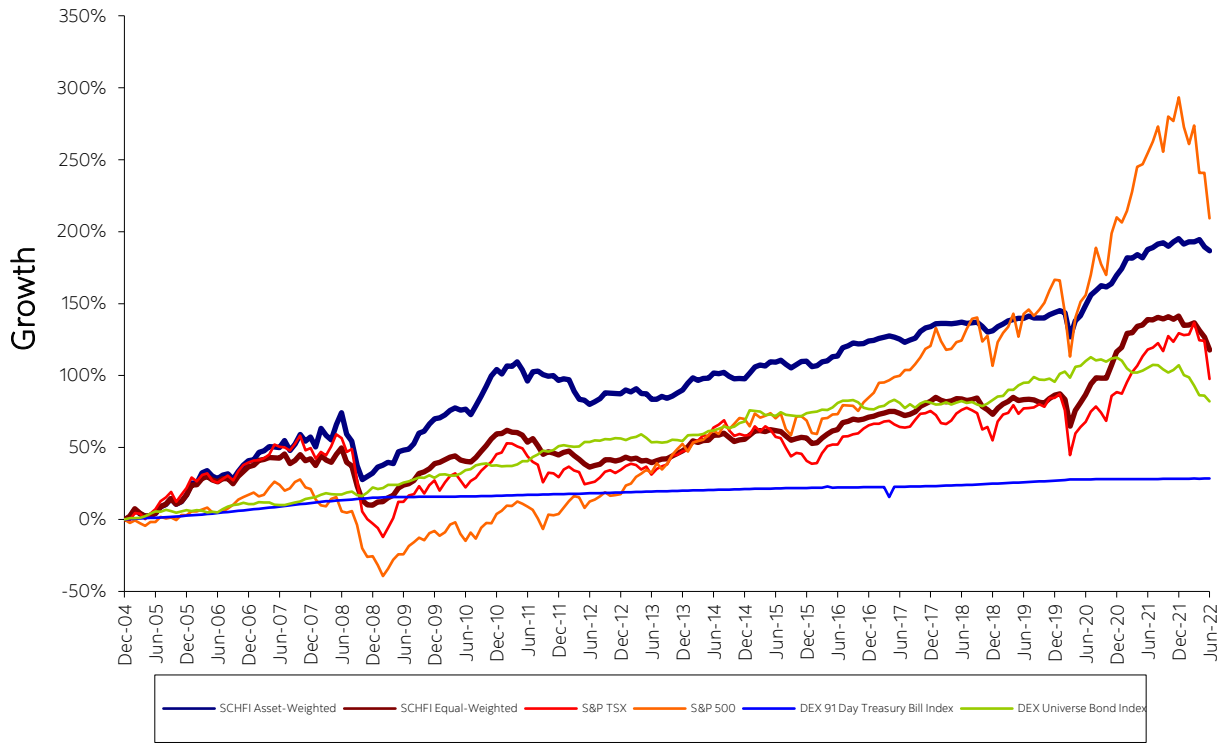
Month End Jun-22	Value	Return MoM	Return YTD	Ann. Vol**	Rolling 12 Mth	Sharpe Ratio^	Correlation to S&P 500^	Correlation to S&P/TSX 60^
Scotiabank Canadian Hedge Fund Index Asset-Weighted	2,867.37	-0.89%	-2.88%	8.22%	-0.28%	0.61	0.30	0.61
Scotiabank Canadian Hedge Fund Index Equal-Weighted	2,177.11	-3.95%	-9.82%	7.99%	-8.87%	0.42	0.57	0.80
S&P/TSX Composite	18,268.24	-11.87%	-13.92%	13.57%				
S&P/TSX 60 Total Return	3,560.24	-8.33%	-9.62%	N/A	-2.41%			
S&P 500 (quoted in USD)	3,747.70	-9.30%	-21.37%	14.87%				
S&P 500 (CAD-adjusted)	4,824.41	-7.68%	-19.90%	11.96%				
S&P 500 (Total Return in USD)	7,993.43	-8.25%	-19.99%	N/A	-10.64%			
DEX 91 Day Treasury Bill Index	423.08	0.05%	0.28%	2.05%				
DEX Universe Bond Index	1,041.96	-2.16%	-12.13%	4.02%				

** Of monthly returns

^ Values are calculated monthly



Historical Monthly Performance





Historical Monthly Returns

Scotiabank Canadian Hedge Fund Index Asset-Weighted

	Jan	Feb	Mar	Apr	May	Jun	Jul	Aug	Sep	Oct	Nov	Dec	YTD
2022	-1.32%	0.58%	-0.06%	0.53%	-1.73%	-0.89%							-2.88%
2021	1.67%	2.80%	-0.10%	0.87%	-0.75%	2.02%	0.49%	0.85%	0.30%	-0.86%	1.08%	0.80%	9.49%
2020	0.52%	-0.63%	-6.82%	4.90%	1.50%	2.92%	2.98%	1.20%	1.26%	-0.28%	0.81%	2.23%	10.61%
2019	1.26%	0.72%	0.96%	0.33%	0.44%	-0.05%	0.70%	-0.61%	-0.02%	-0.01%	1.00%	0.61%	5.45%
2018	0.84%	0.10%	0.03%	-0.14%	0.22%	0.31%	-0.38%	0.20%	0.14%	-1.20%	-1.72%	0.42%	-1.19%
2017	0.17%	0.65%	0.35%	0.42%	-0.39%	-0.62%	-1.00%	0.70%	0.63%	2.08%	0.99%	0.40%	4.43%
2016	-1.84%	0.40%	1.24%	0.32%	1.35%	0.28%	2.63%	0.62%	0.92%	-0.29%	0.06%	0.85%	6.68%
2015	2.06%	2.04%	0.62%	-0.26%	1.36%	-0.09%	0.63%	-1.34%	-1.19%	1.09%	1.10%	0.08%	6.21%
2014	2.54%	1.91%	-0.87%	0.63%	0.15%	1.73%	-0.13%	0.37%	-1.32%	-0.91%	0.19%	-0.14%	4.14%
2013	1.47%	-0.76%	1.26%	-1.80%	-0.08%	-2.07%	0.02%	1.07%	-0.76%	0.90%	1.20%	1.01%	1.40%
2012	0.65%	-0.35%	-4.06%	-2.99%	-0.41%	-1.53%	0.96%	1.21%	2.27%	-0.19%	-0.16%	-0.08%	-4.73%
2011	-1.61%	2.83%	-0.09%	1.42%	-2.59%	-3.86%	3.29%	0.21%	-1.22%	-0.55%	0.27%	-1.72%	-3.77%

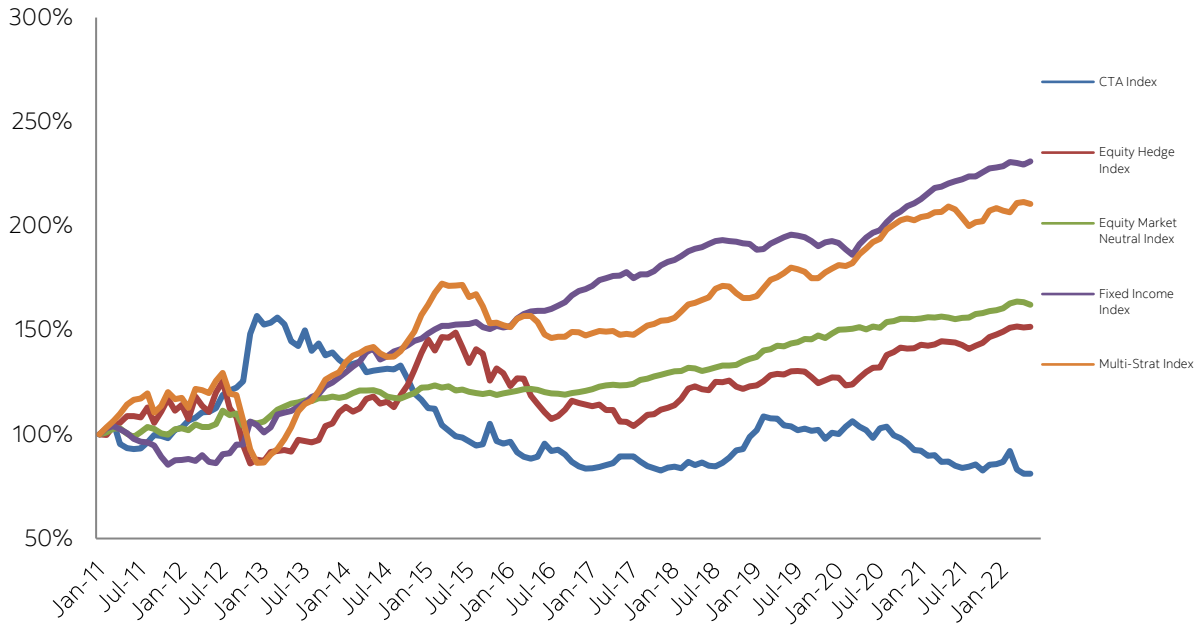
Scotiabank Canadian Hedge Fund Index Equal-Weighted

	Jan	Feb	Mar	Apr	May	Jun	Jul	Aug	Sep	Oct	Nov	Dec	YTD
2022	-2.71%	0.14%	0.66%	-2.28%	-2.03%	-3.95%							-9.82%
2021	1.46%	4.40%	0.21%	2.00%	0.39%	1.57%	-0.09%	0.71%	-0.45%	0.62%	-0.72%	0.98%	11.56%
2020	0.46%	-2.22%	-9.99%	6.59%	2.97%	3.08%	4.07%	2.23%	-0.15%	-0.04%	4.52%	4.50%	16.02%
2019	2.41%	1.61%	1.01%	1.55%	-1.14%	0.33%	0.12%	-0.22%	-0.83%	-0.35%	1.62%	1.44%	7.74%
2018	1.37%	-1.05%	-0.59%	0.39%	0.88%	-0.17%	-0.54%	0.34%	0.62%	-3.18%	-1.35%	-1.74%	-5.01%
2017	0.39%	0.81%	0.58%	0.59%	0.03%	-0.75%	-0.98%	0.61%	0.97%	2.19%	0.96%	1.05%	6.60%
2016	-2.51%	0.27%	2.25%	1.77%	1.30%	0.57%	2.98%	0.53%	1.02%	-0.47%	0.35%	0.80%	9.12%
2015	1.89%	1.85%	0.07%	-0.40%	0.88%	-0.41%	-0.53%	-1.89%	-1.77%	0.58%	0.65%	-0.24%	0.62%
2014	1.89%	2.67%	-0.62%	0.84%	0.11%	2.32%	-0.06%	0.97%	-1.89%	-1.77%	0.64%	0.32%	5.44%
2013	1.25%	-0.85%	0.39%	-1.47%	0.39%	-1.05%	0.85%	0.79%	0.27%	1.41%	1.15%	1.22%	4.38%
2012	1.24%	0.59%	-2.06%	-1.86%	-2.21%	-1.56%	0.77%	0.58%	2.26%	0.12%	-0.71%	0.66%	-2.28%
2011	0.24%	1.29%	-0.70%	-0.20%	-1.15%	-3.08%	1.57%	-3.22%	-3.81%	1.14%	-0.50%	-0.97%	-9.17%

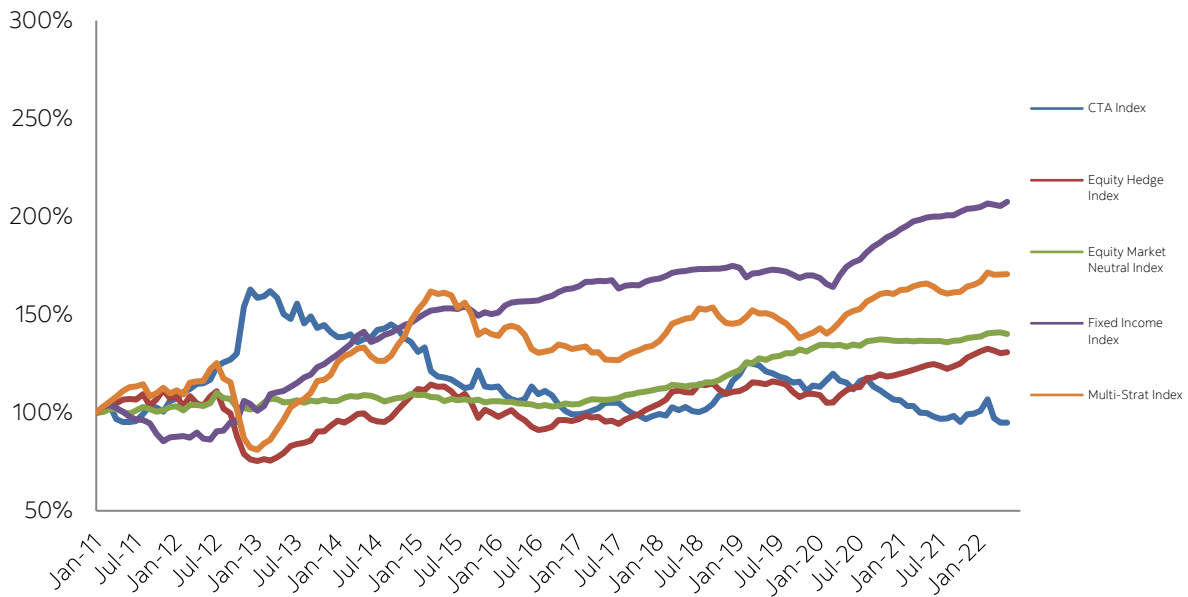


Sub-Index Performance

Asset-Weighted



Equal-Weighted





CTA Index Equal-Weighted

	Jan	Feb	Mar	Apr	May	Jun	Jul	Aug	Sep	Oct	Nov	Dec	YTD
2022	2.22%	4.93%	8.62%	6.05%	-2.02%	0.57%							21.75%
2021	2.12%	9.10%	-1.13%	4.46%	1.44%	-1.53%	-1.03%	0.31%	1.41%	2.52%	-4.66%	-1.18%	11.77%
2020	0.13%	0.85%	15.55%	-1.66%	-2.18%	-1.13%	2.77%	2.26%	-4.09%	0.50%	1.34%	9.38%	24.59%
2019	-4.73%	1.71%	-0.09%	2.73%	-4.00%	-0.98%	-0.71%	7.64%	-7.25%	-2.30%	0.77%	0.69%	-7.11%
2018	5.79%	-8.93%	-2.31%	-0.08%	-0.78%	-1.17%	1.10%	1.69%	0.48%	-5.87%	1.87%	2.64%	-6.25%
2017	-2.87%	-0.02%	-3.25%	-0.19%	-1.80%	-1.20%	0.22%	1.44%	-3.16%	4.02%	0.37%	1.44%	-5.13%
2016	3.07%	2.84%	-3.02%	-0.77%	-3.09%	3.86%	1.16%	-3.52%	-1.76%	-2.15%	-2.09%	-0.26%	-5.94%
2015	5.08%	-0.55%	-0.59%	-2.58%	-0.82%	-1.38%	-0.80%	-1.73%	0.33%	-4.00%	2.47%	-0.63%	-5.37%
2014	-0.71%	4.18%	-1.35%	1.49%	-2.00%	-0.40%	1.19%	2.80%	4.19%	0.91%	5.73%	3.00%	20.40%
2013	0.66%	1.12%	1.25%	2.75%	0.00%	-0.04%	-2.97%	-2.22%	-1.20%	-1.78%	1.55%	1.11%	0.07%
2012	-3.93%	-1.98%	-0.86%	1.09%	5.92%	-3.37%	1.42%	-2.05%	-4.24%	-3.31%	-1.58%	0.08%	-12.48%
2011	1.82%	-9.04%	-2.39%	-0.43%	-0.72%	-1.90%	-1.90%	0.53%	7.29%	-6.68%	-0.44%	0.49%	-13.40%

CTA Index Asset-Weighted

	Jan	Feb	Mar	Apr	May	Jun	Jul	Aug	Sep	Oct	Nov	Dec	YTD
2022	2.21%	4.46%	8.10%	4.10%	-1.92%	0.55%							18.49%
2021	2.38%	9.44%	-0.94%	4.57%	0.80%	-1.51%	-1.62%	0.84%	0.68%	1.71%	-4.40%	-1.67%	10.05%
2020	0.57%	0.92%	16.18%	-1.82%	-1.91%	-0.88%	2.88%	2.23%	-3.79%	0.71%	1.98%	8.12%	26.50%
2019	-4.77%	1.68%	-0.10%	2.75%	-3.92%	-0.93%	-0.57%	7.57%	-7.25%	-2.31%	0.80%	0.77%	-6.86%
2018	6.02%	-9.67%	-2.32%	-0.02%	-1.89%	-1.01%	0.69%	0.66%	1.27%	-6.55%	1.00%	3.10%	-9.27%
2017	-2.61%	0.31%	-3.66%	0.21%	-2.21%	-1.37%	0.74%	1.22%	-3.28%	3.33%	0.36%	1.21%	-5.84%
2016	3.56%	2.52%	-2.44%	-1.72%	-3.52%	4.59%	0.79%	-4.05%	-1.39%	-2.29%	-3.58%	-0.30%	-7.98%
2015	6.51%	-0.80%	-0.16%	-3.02%	-0.52%	-1.78%	0.86%	-1.15%	0.47%	-4.15%	3.04%	-0.68%	-1.79%
2014	-1.01%	3.64%	-1.74%	1.40%	-1.71%	-0.30%	1.95%	2.88%	3.90%	0.62%	6.37%	3.22%	20.60%
2013	0.62%	1.14%	1.06%	3.70%	-0.02%	0.08%	-2.82%	-2.42%	-1.18%	-1.42%	1.65%	0.72%	0.91%
2012	-5.20%	-2.34%	-0.99%	0.98%	7.05%	-3.72%	0.76%	-2.47%	-3.89%	-2.64%	-1.11%	0.19%	-13.08%
2011	-0.20%	-7.00%	-2.51%	-2.71%	-0.61%	-1.92%	-2.07%	0.60%	10.34%	-7.91%	-1.15%	0.85%	-14.36%

Equity Hedge Index Equal-Weighted

	Jan	Feb	Mar	Apr	May	Jun	Jul	Aug	Sep	Oct	Nov	Dec	YTD
2022	-4.34%	-0.82%	0.57%	-4.11%	-2.43%	-5.50%							-15.64%
2021	0.83%	5.06%	1.07%	2.22%	0.37%	2.14%	-0.12%	0.74%	-1.01%	1.53%	-0.63%	0.95%	13.81%
2020	0.57%	-2.56%	-10.10%	7.58%	3.67%	2.98%	3.04%	3.27%	-0.11%	0.45%	6.83%	4.85%	21.02%
2019	4.13%	2.44%	0.88%	2.34%	-1.57%	0.96%	0.47%	-0.82%	-0.67%	0.25%	2.95%	1.21%	13.15%
2018	1.03%	-0.77%	-0.98%	0.37%	2.00%	-0.37%	-0.69%	0.74%	-0.04%	-4.80%	-1.26%	-3.45%	-8.09%
2017	0.81%	0.84%	0.86%	0.91%	0.59%	-0.85%	-1.17%	1.12%	1.13%	2.33%	1.32%	1.22%	9.45%
2016	-3.62%	0.20%	3.43%	2.28%	1.44%	0.14%	3.94%	0.30%	1.47%	-1.09%	0.44%	0.87%	10.03%
2015	1.44%	2.49%	-0.40%	-0.51%	1.26%	-0.53%	-0.89%	-3.26%	-2.35%	1.51%	0.05%	-0.64%	-1.95%
2014	1.97%	3.97%	0.32%	-0.62%	-0.14%	3.76%	-0.37%	0.88%	-2.89%	-1.98%	1.00%	0.47%	6.32%
2013	1.80%	-1.05%	0.48%	-2.51%	0.40%	-1.59%	2.32%	1.50%	1.29%	2.26%	1.46%	1.53%	8.05%
2012	1.77%	1.62%	-3.00%	-2.27%	-3.34%	-1.81%	0.51%	1.38%	3.59%	0.12%	-0.54%	1.01%	-1.21%
2011	-0.52%	2.56%	-0.98%	0.08%	-2.14%	-3.25%	2.17%	-4.38%	-7.15%	4.19%	-1.42%	-2.02%	-12.62%

Equity Hedge Index Asset-Weighted

	Jan	Feb	Mar	Apr	May	Jun	Jul	Aug	Sep	Oct	Nov	Dec	YTD
2022	-4.40%	-0.23%	-0.01%	-2.71%	-2.19%	-5.05%							-13.82%
2021	0.56%	4.31%	0.79%	2.00%	0.25%	2.43%	0.74%	1.17%	-0.55%	1.81%	-0.34%	0.88%	14.87%
2020	0.86%	-1.45%	-5.89%	6.57%	2.82%	2.17%	3.24%	2.15%	-0.08%	0.13%	4.73%	3.27%	19.51%
2019	4.77%	2.59%	1.08%	2.14%	-1.38%	0.50%	0.16%	-0.09%	-0.45%	0.38%	2.84%	0.02%	13.12%
2018	1.24%	0.32%	-0.25%	0.22%	2.09%	0.11%	-0.80%	0.26%	0.18%	-4.07%	-1.19%	-3.26%	-5.19%
2017	-0.29%	0.37%	1.09%	-0.15%	-0.27%	-0.79%	-1.38%	1.19%	0.94%	1.91%	0.84%	0.96%	4.43%
2016	-2.86%	0.28%	2.65%	2.14%	1.57%	0.11%	4.57%	0.96%	1.55%	-0.36%	0.14%	1.20%	12.42%
2015	1.56%	2.36%	0.44%	-0.19%	1.20%	0.01%	-0.15%	-2.04%	-2.25%	1.12%	1.05%	-0.10%	2.94%
2014	2.65%	4.23%	0.88%	-1.17%	-0.37%	3.35%	-0.18%	0.70%	-2.38%	-0.89%	0.98%	0.48%	8.39%
2013	0.69%	-2.39%	0.09%	-5.02%	-0.09%	-1.86%	2.28%	2.72%	0.31%	1.94%	0.92%	1.06%	0.39%
2012	3.07%	-0.18%	-6.35%	-3.39%	-3.51%	-2.86%	1.23%	2.84%	3.85%	-0.91%	-0.64%	-0.69%	-7.78%
2011	-3.57%	4.65%	-0.26%	1.66%	-4.74%	-5.24%	4.89%	-1.52%	-9.31%	4.60%	-1.77%	-4.74%	-15.32%



Equity Market Neutral Index Equal-Weighted

	Jan	Feb	Mar	Apr	May	Jun	Jul	Aug	Sep	Oct	Nov	Dec	YTD
2022	-0.91%	0.79%	-0.20%	0.46%	-0.65%	0.23%							-0.29%
2021	0.17%	2.89%	-0.36%	0.97%	-0.74%	1.20%	0.57%	0.74%	0.07%	-0.38%	-0.22%	1.36%	6.40%
2020	0.12%	-0.25%	-1.26%	2.50%	0.72%	0.68%	2.47%	0.91%	0.61%	-0.20%	0.85%	1.71%	9.16%
2019	1.37%	0.70%	0.75%	0.02%	1.59%	0.04%	0.51%	0.26%	-0.91%	-0.19%	0.63%	0.17%	5.03%
2018	1.12%	0.24%	0.07%	-0.55%	0.43%	-0.10%	-0.09%	0.66%	-0.03%	-1.61%	-1.35%	0.41%	-0.84%
2017	0.11%	-0.18%	0.26%	-0.17%	-0.04%	0.07%	-0.56%	0.65%	0.12%	0.84%	0.34%	0.31%	1.76%
2016	0.01%	-0.25%	0.31%	-0.84%	0.94%	-0.50%	1.67%	0.37%	0.35%	-0.07%	-0.37%	-0.18%	1.44%
2015	3.19%	-0.19%	1.87%	-0.61%	1.25%	0.31%	1.17%	-0.06%	1.58%	-0.93%	1.38%	1.22%	10.57%
2014	0.28%	1.34%	-0.22%	-0.43%	0.64%	-0.12%	1.29%	0.12%	0.90%	1.83%	1.22%	1.26%	8.39%
2013	1.49%	0.88%	-0.15%	-0.15%	0.25%	0.63%	1.44%	0.43%	0.70%	0.49%	0.51%	0.83%	7.60%
2012	-0.38%	0.11%	-0.79%	-0.29%	-0.18%	-1.02%	0.64%	-0.83%	0.49%	1.10%	-0.43%	0.11%	-1.47%
2011	0.20%	-1.01%	-0.11%	-1.84%	1.04%	-0.55%	0.35%	-0.71%	0.66%	-1.47%	0.65%	0.06%	-2.74%

Equity Market Neutral Index Asset-Weighted

	Jan	Feb	Mar	Apr	May	Jun	Jul	Aug	Sep	Oct	Nov	Dec	YTD
2022	-0.80%	0.88%	0.39%	1.41%	-0.95%	1.16%							2.08%
2021	1.49%	3.08%	0.49%	0.76%	-1.65%	2.24%	0.68%	0.56%	0.43%	-1.72%	1.83%	1.40%	9.91%
2020	-1.13%	-0.21%	-0.45%	2.59%	0.58%	1.05%	2.41%	1.51%	0.60%	-0.73%	-2.18%	1.19%	5.22%
2019	2.11%	-0.35%	0.37%	-1.40%	1.58%	0.83%	1.01%	-2.23%	-0.41%	-0.08%	0.56%	0.99%	2.95%
2018	1.43%	0.59%	-0.23%	-0.72%	0.03%	0.50%	-0.14%	1.00%	-0.66%	-1.57%	-2.96%	1.35%	-1.46%
2017	0.42%	-0.12%	0.26%	-0.30%	-0.45%	0.38%	0.12%	1.10%	0.24%	0.64%	0.32%	0.52%	3.15%
2016	0.10%	0.18%	0.50%	-0.68%	0.92%	-0.39%	1.75%	0.32%	0.74%	-0.05%	-0.04%	0.16%	3.55%
2015	2.23%	0.39%	1.26%	-0.19%	0.93%	0.45%	1.08%	-0.13%	1.26%	-0.84%	1.48%	1.27%	9.55%
2014	0.11%	1.28%	-0.34%	-0.89%	0.62%	0.68%	0.69%	0.07%	0.18%	1.21%	0.97%	0.67%	5.35%
2013	1.07%	0.52%	0.17%	-0.26%	0.18%	0.56%	1.39%	0.51%	0.81%	0.62%	0.71%	0.58%	7.06%
2012	0.50%	0.62%	0.13%	-0.31%	-0.86%	-0.60%	-0.04%	-0.37%	0.66%	0.29%	0.60%	0.54%	1.14%
2011	0.67%	-0.83%	0.45%	-1.62%	0.40%	-0.91%	-0.47%	-0.33%	0.46%	-0.87%	0.68%	0.43%	-1.96%

Fixed Income Index Equal-Weighted

	Jan	Feb	Mar	Apr	May	Jun	Jul	Aug	Sep	Oct	Nov	Dec	YTD
2022	-0.82%	-1.24%	-0.05%	-1.10%	-0.51%	-1.11%							-4.74%
2021	1.32%	1.11%	0.02%	0.64%	0.30%	0.72%	0.26%	0.28%	0.31%	-0.05%	-0.23%	0.31%	5.09%
2020	0.64%	-0.41%	-15.86%	4.43%	2.72%	3.97%	3.32%	1.70%	0.59%	0.80%	2.53%	1.22%	4.00%
2019	2.12%	1.11%	0.45%	1.28%	-0.52%	0.70%	0.73%	-0.50%	0.36%	0.13%	0.36%	0.88%	7.30%
2018	0.85%	-0.26%	-0.32%	1.01%	0.15%	0.39%	0.48%	0.17%	0.39%	-0.82%	-0.92%	-1.60%	-0.51%
2017	0.98%	1.16%	0.34%	0.64%	0.25%	-0.04%	0.34%	0.01%	0.89%	0.73%	0.14%	0.30%	5.89%
2016	-1.78%	-0.89%	3.54%	2.58%	1.32%	0.72%	2.10%	1.60%	1.19%	1.35%	0.93%	1.24%	14.71%
2015	-2.83%	1.11%	0.26%	0.55%	0.35%	-0.18%	-0.38%	-0.97%	-0.99%	0.85%	-0.02%	-0.79%	-3.04%
2014	0.87%	0.96%	0.35%	0.17%	0.35%	0.20%	0.05%	0.05%	0.03%	0.25%	0.55%	-0.49%	3.38%
2013	1.44%	0.00%	0.24%	-0.05%	0.27%	-2.48%	0.88%	0.14%	-0.10%	1.22%	0.59%	0.23%	2.36%
2012	2.35%	0.91%	0.31%	0.11%	0.12%	0.22%	0.80%	0.68%	1.15%	0.96%	0.20%	0.67%	8.79%
2011	1.41%	1.13%	0.31%	0.37%	0.02%	-0.15%	0.92%	-1.42%	-1.79%	1.22%	-0.61%	0.52%	1.90%

Fixed Income Index Asset-Weighted

	Jan	Feb	Mar	Apr	May	Jun	Jul	Aug	Sep	Oct	Nov	Dec	YTD
2022	-0.92%	-1.14%	-0.12%	-0.81%	-0.54%	-0.85%							-4.31%
2021	1.45%	1.43%	-0.14%	0.84%	0.40%	0.68%	0.10%	0.15%	0.36%	0.02%	-0.54%	0.36%	5.21%
2020	0.97%	-0.70%	-19.99%	6.80%	2.94%	5.32%	3.65%	1.93%	0.60%	0.97%	3.20%	1.19%	4.09%
2019	1.86%	0.97%	0.49%	1.25%	-0.29%	0.94%	0.97%	-0.48%	0.93%	0.73%	0.50%	0.96%	9.19%
2018	0.89%	-0.20%	-0.32%	0.68%	-0.29%	-0.03%	0.66%	0.25%	0.50%	-0.48%	-1.10%	-0.91%	-0.40%
2017	1.34%	1.17%	0.28%	0.75%	0.43%	0.46%	0.62%	0.02%	0.85%	0.79%	0.24%	0.25%	7.43%
2016	-1.59%	-1.36%	2.65%	1.75%	1.13%	0.69%	1.93%	1.59%	0.89%	1.28%	0.61%	0.96%	10.96%
2015	0.21%	1.38%	0.79%	0.78%	0.63%	-0.22%	-0.39%	-0.95%	-1.27%	0.91%	0.39%	-0.51%	1.72%
2014	1.07%	1.24%	0.59%	0.48%	0.76%	0.72%	0.25%	-0.26%	-0.15%	-0.34%	-0.22%	-1.43%	2.70%
2013	1.66%	0.47%	0.64%	0.10%	0.93%	-1.59%	1.03%	0.04%	0.79%	1.61%	0.92%	0.47%	7.26%
2012	2.37%	1.45%	0.73%	0.15%	0.04%	0.59%	0.91%	1.14%	1.88%	1.35%	0.50%	0.91%	12.67%
2011	1.37%	1.08%	0.05%	0.38%	0.11%	0.09%	0.66%	-1.63%	-0.66%	1.03%	-0.51%	0.48%	2.44%



Multi-Strat Index Equal-Weighted

	Jan	Feb	Mar	Apr	May	Jun	Jul	Aug	Sep	Oct	Nov	Dec	YTD
2022	-3.05%	1.02%	1.20%	-1.06%	-2.32%	-4.54%							-8.56%
2021	1.86%	5.26%	0.64%	3.37%	0.34%	1.04%	0.42%	1.01%	-0.22%	1.05%	0.62%	1.45%	18.07%
2020	0.43%	-3.82%	-12.56%	9.20%	4.20%	4.47%	6.92%	1.88%	0.26%	-0.18%	2.52%	4.98%	17.81%
2019	1.59%	1.46%	1.51%	0.57%	-0.15%	0.01%	0.42%	-1.07%	-1.18%	-0.28%	1.35%	2.47%	6.82%
2018	2.75%	-0.66%	0.09%	0.09%	0.05%	0.61%	-0.92%	-0.70%	1.90%	-2.93%	-2.11%	0.06%	-1.88%
2017	0.20%	1.00%	0.62%	0.26%	-0.96%	-1.44%	-0.71%	0.42%	0.16%	1.57%	0.66%	0.99%	2.76%
2016	-1.93%	1.67%	2.50%	2.68%	1.11%	0.65%	2.49%	1.12%	1.34%	0.43%	-0.43%	1.19%	13.51%
2015	1.86%	2.35%	-1.07%	0.08%	-0.59%	-1.53%	-1.38%	-2.42%	-2.73%	1.04%	0.96%	1.59%	-2.00%
2014	2.91%	3.44%	0.89%	0.90%	0.24%	3.21%	-0.37%	0.67%	-3.02%	-2.24%	-0.18%	0.44%	6.87%
2013	0.45%	-2.28%	0.07%	-2.85%	-0.14%	-0.09%	1.69%	1.32%	0.84%	1.30%	0.48%	1.86%	2.57%
2012	3.06%	0.68%	-0.80%	-2.55%	-5.06%	-1.55%	0.55%	0.57%	2.11%	-0.54%	-1.19%	0.59%	-4.30%
2011	2.65%	3.34%	-0.84%	0.45%	-0.86%	-3.97%	1.71%	-3.76%	-7.07%	1.63%	-1.19%	-0.74%	-8.79%

Multi-Strat Index Asset-Weighted

	Jan	Feb	Mar	Apr	May	Jun	Jul	Aug	Sep	Oct	Nov	Dec	YTD
2022	-0.31%	0.07%	-0.93%	2.20%	-2.39%	0.84%							-0.58%
2021	2.51%	2.09%	-1.63%	-0.08%	-1.95%	2.68%	0.41%	1.46%	0.78%	-2.39%	2.85%	-0.36%	6.36%
2020	2.01%	0.76%	-1.72%	3.74%	0.55%	3.43%	1.77%	0.17%	3.47%	-0.23%	-0.44%	2.21%	16.72%
2019	-1.28%	1.20%	1.80%	0.50%	1.22%	-1.37%	1.12%	0.01%	-0.18%	-0.49%	1.29%	0.19%	4.03%
2018	-0.34%	2.15%	0.19%	-0.45%	0.55%	1.24%	-0.99%	-0.07%	0.70%	-0.21%	-1.16%	2.62%	4.24%
2017	0.36%	0.76%	0.14%	1.26%	-0.71%	-1.87%	-2.00%	0.95%	0.22%	2.49%	0.61%	-0.60%	1.54%
2016	-0.32%	0.82%	2.32%	1.50%	1.63%	0.76%	2.33%	1.15%	1.05%	0.49%	-0.47%	0.73%	12.63%
2015	2.32%	2.35%	0.73%	1.11%	1.48%	-0.43%	-0.64%	-1.78%	0.01%	1.57%	1.09%	0.95%	9.04%
2014	2.02%	2.06%	0.50%	0.90%	0.74%	2.47%	0.79%	-0.15%	-1.89%	-1.36%	-0.02%	0.53%	6.68%
2013	0.72%	-0.25%	0.22%	-1.18%	0.33%	-0.32%	1.39%	1.55%	0.49%	1.01%	0.27%	0.63%	4.94%
2012	2.68%	0.84%	-0.01%	-1.81%	-3.85%	-1.23%	0.42%	0.07%	1.58%	-0.10%	-1.03%	0.68%	-1.89%
2011	3.56%	2.61%	-0.63%	0.14%	0.14%	-3.37%	0.83%	-3.52%	-5.05%	0.21%	-0.78%	-0.65%	-6.63%



Constituents

Algonquin Debt Strategies Fund LP	Formula Growth Hedge Fund Class F USD	Panorama Fund LP
AlphaNorth Partners Fund	Friedberg Asset Allocation Fund Ltd.	PCJ Absolute Return Strategy CAD
Amethyst Arbitrage Fund (CAD)	Friedberg Global-Macro Hedge Fund, Ltd.	Peregrine Fund
Arrow Capital Management, Inc. (Wavefront Global Diversified I - F)	Galliant Equity Long/Short Fund LP	Picton Mahoney Fortified Market Neutral Alternative Fund A
Arrow Performance Fund Class A	Good Opportunities Fund - F Class	Picton Mahoney Income Opportunities Fund A
Auspice Capital Advisors Ltd (Auspice Diversified)	Goodwood Fund	Picton Mahoney Long Short Equity Fund A
Aventine Canadian Equity Fund	Guardian Strategic Income Fund Composite	Picton Mahoney Market Neutral Equity Fund A
BT Global Growth Fund LP	IBV Capital Global Value Fund	Polar Long/Short Fund
CC&L All Strategies Fund	JC Clark Adaly Trust D	Polar Multi-Strategy Fund
CC&L Multi-Strategy Composite	JC Clark Focused Opportunities Fund	Primevestfund
CC&L Q. Global Equity Market Neutral (CAD)	JC Clark Preservation Trust Class B	Rosalind Capital Partners L.P.
DKAM Capital Ideas Fund, L.P.	Jemekk Long/Short Fund	RP Debt Opportunities
Dynamic Alpha Performance Fund - Series A	Jemekk Total Return Fund	RP Select Opportunities
Dynamic Credit Absolute Return II - Series A	JM Catalyst Fund	Stornoway Recovery Fund LP
Dynamic Global Growth Opportunities Fund - Series F	Lawrence Park Credit Strategies Fund	Vantage Protected Performance Fund
Dynamic Income Opportunities Fund - Series A	LionGuard Opportunities Fund	Venator Alternative Income Fund Class F
East Coast Investment Grade II Fund Class F	Lions Bay Fund Class A	Venator Founders Fund Class A
EHP Foundation Alternative Fund Class F	Lumen Long Short Equity Fund LP - Class B	Vision Opportunity Fund LP
EHP Global Multi-Strategy Alternative Fund Class F	Lynwood Opportunities Fund Class F	Waratah Alternative ESG Fund
Ewing Morris Opportunities Fund LP Share Class B	Maxam Arbitrage Fund Class F	Waratah Income
Formula Growth Alpha Fund Class F USD	Maxam Diversified Strategies Fund	Waratah One
Formula Growth Focus Fund Class F USD	Ninepoint Credit Income Opportunities Class B	Waratah Performance
Formula Growth Global Opportunities Fund Class F USD	Palos Income Fund LP Class X	XIB Fund Class C

Please send Index and subscription inquiries to schfindex.data@scotiabank.com

Media inquiries: (416) 933-3250

www.gbm.scotiabank.com

IMPORTANT NOTICE AND DISCLAIMER: The Bank of Nova Scotia ("Scotiabank") calculates and publishes the Scotiabank Canadian Hedge Fund Index (the "Index") at its own expense. It is prepared solely as an information service to financial market participants and is published on a best-efforts basis. Scotiabank and/or its affiliates do not recommend, express any opinion or accept any liability regarding the constituent funds or their respective holdings by virtue of their inclusion in the Index. The data used to construct the Index is provided on a voluntary basis by the constituent funds and is not reviewed, audited or independently verified in any way by Scotiabank and/or its affiliates.

In the ordinary course of business, Scotiabank and/or its affiliates June hold or trade, for their own accounts and the accounts of their customers, funds included in the Index, or any of the securities held by funds included in the Index, and/or June have an advisory, underwriting or other relationship with a fund included in the Index. The Index is based on data believed to be reliable. No guarantee is made as to the accuracy, timeliness, or completeness of the data used in the Index. Neither Scotiabank nor its affiliates, accept liability whatsoever for any loss arising from any use of this report or its contents. In the event data input to the Index calculation is published and subsequently believed to be in error, Scotiabank June at its sole discretion declare the data error to be immaterial to the Index value, and is under no obligation to re-calculate an already published Index value. The Index construction rules, guidelines, and practices June be changed at any time at Scotiabank's sole discretion, though Scotiabank will endeavor to provide reasonable advance notice of such changes, including termination of the Index. The information included herein is not intended for use by retail clients.

™ Trademark of The Bank of Nova Scotia. Used under license, where applicable. Scotiabank, together with "Global Banking and Markets", is a marketing name for the global corporate and investment banking and capital markets businesses of The Bank of Nova Scotia and certain of its affiliates in the countries where they operate, including Scotia Capital Inc., Scotia Capital (USA) Inc., and Scotia Capital Inc. is a Member of the Canadian Investor Protection Fund. Scotia Capital (USA) Inc. is a registered broker-dealer with the SEC and is a member of FINRA, NYSE and SIPC. Scotia Capital (Europe) Limited is authorized and regulated by the Financial Services Authority.

The Scotiabank Canadian Hedge Fund Index is copyright The Bank of Nova Scotia 2020.