



# SCOTIABANK CANADIAN HEDGE FUND INDEX

The Scotiabank Canadian Hedge Fund Index ended July 2023, **up 0.28% MOM** on an asset-weighted basis and **up 1.33% MOM** on an equal-weighted basis.

The Scotiabank Canadian Hedge Fund Index provides a comprehensive overview of the Canadian Hedge Fund universe. Returns are calculated using an equal-weighting and an asset-based weighting of the funds. The index includes open and closed funds with a minimum AUM of C\$15 million and a 12-month track record, that are managed by Canadian-domiciled managers.

## Index Summary

Month End Jul-23	Value	Return MoM	Return YTD	Ann. Vol**	Rolling 12 Mth	Sharpe Ratio^	Correlation to S&P 500^	Correlation to S&P/TSX 60^
Scotiabank Canadian Hedge Fund Index Asset-Weighted	3,070.09	0.28%	2.04%	7.98%	6.07%	0.61	0.29	0.59
Scotiabank Canadian Hedge Fund Index Equal-Weighted	2,283.62	1.33%	3.64%	7.85%	2.86%	0.41	0.57	0.8
S&P/TSX Composite	20,626.64	2.34%	6.41%	13.70%				
S&P/TSX 60 Total Return	3,988.05	2.14%	7.99%	N/A	7.80%			
S&P 500 (quoted in USD)	4,588.96	3.11%	19.52%	15.20%				
S&P 500 (CAD-adjusted)	6,052.84	2.71%	16.31%	12.10%				
S&P 500 (Total Return in USD)	9,866.77	3.21%	20.65%	N/A	13.01%			
DEX 91 Day Treasury Bill Index	440.47	0.40%	2.54%	2.00%				
DEX Universe Bond Index	1,063.10	-1.08%	1.39%	4.27%				

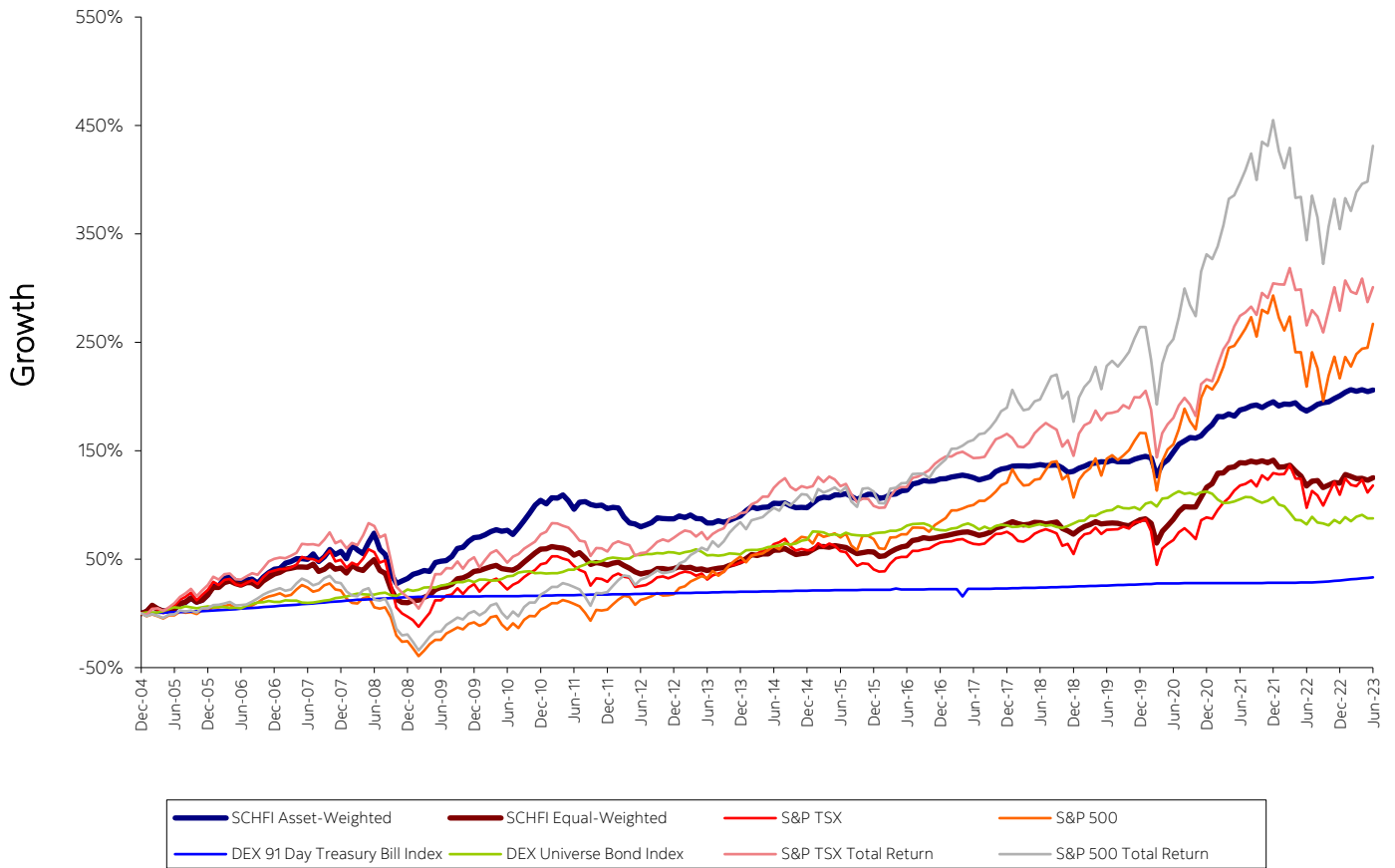
\*\* Of monthly returns

^Values are calculated monthly

**Scotiabank**<sup>TM</sup>



# Historical Monthly Performance





## Historical Monthly Returns

### Scotiabank Canadian Hedge Fund Index Asset-Weighted

	Jan	Feb	Mar	Apr	May	Jun	Jul	Aug	Sep	Oct	Nov	Dec	YTD
<b>2023</b>	1.03%	0.79%	-0.45%	0.42%	-0.51%	0.47%	0.28%						<b>2.04%</b>
<b>2022</b>	-1.32%	0.58%	-0.06%	0.53%	-1.73%	-0.89%	0.95%	1.17%	0.51%	0.29%	1.01%	0.91%	<b>1.90%</b>
<b>2021</b>	1.67%	2.80%	-0.10%	0.87%	-0.75%	2.02%	0.49%	0.85%	0.30%	-0.86%	1.08%	0.80%	<b>9.49%</b>
<b>2020</b>	0.52%	-0.63%	-6.82%	4.90%	1.50%	2.92%	2.98%	1.20%	1.26%	-0.28%	0.81%	2.23%	<b>10.61%</b>
<b>2019</b>	1.26%	0.72%	0.96%	0.33%	0.44%	-0.05%	0.70%	-0.61%	-0.02%	-0.01%	1.00%	0.61%	<b>5.45%</b>
<b>2018</b>	0.84%	0.10%	0.03%	-0.14%	0.22%	0.31%	-0.38%	0.20%	0.14%	-1.20%	-1.72%	0.42%	<b>-1.19%</b>
<b>2017</b>	0.17%	0.65%	0.35%	0.42%	-0.39%	-0.62%	-1.00%	0.70%	0.63%	2.08%	0.99%	0.40%	<b>4.43%</b>
<b>2016</b>	-1.84%	0.40%	1.24%	0.32%	1.35%	0.28%	2.63%	0.62%	0.92%	-0.29%	0.06%	0.85%	<b>6.68%</b>
<b>2015</b>	2.06%	2.04%	0.62%	-0.26%	1.36%	-0.09%	0.63%	-1.34%	-1.19%	1.09%	1.10%	0.08%	<b>6.21%</b>
<b>2014</b>	2.54%	1.91%	-0.87%	0.63%	0.15%	1.73%	-0.13%	0.37%	-1.32%	-0.91%	0.19%	-0.14%	<b>4.14%</b>
<b>2013</b>	1.47%	-0.76%	1.26%	-1.80%	-0.08%	-2.07%	0.02%	1.07%	-0.76%	0.90%	1.20%	1.01%	<b>1.40%</b>
<b>2012</b>	0.65%	-0.35%	-4.06%	-2.99%	-0.41%	-1.53%	0.96%	1.21%	2.27%	-0.19%	-0.16%	-0.08%	<b>-4.73%</b>
<b>2011</b>	-1.61%	2.83%	-0.09%	1.42%	-2.59%	-3.86%	3.29%	0.21%	-1.22%	-0.55%	0.27%	-1.72%	<b>-3.77%</b>

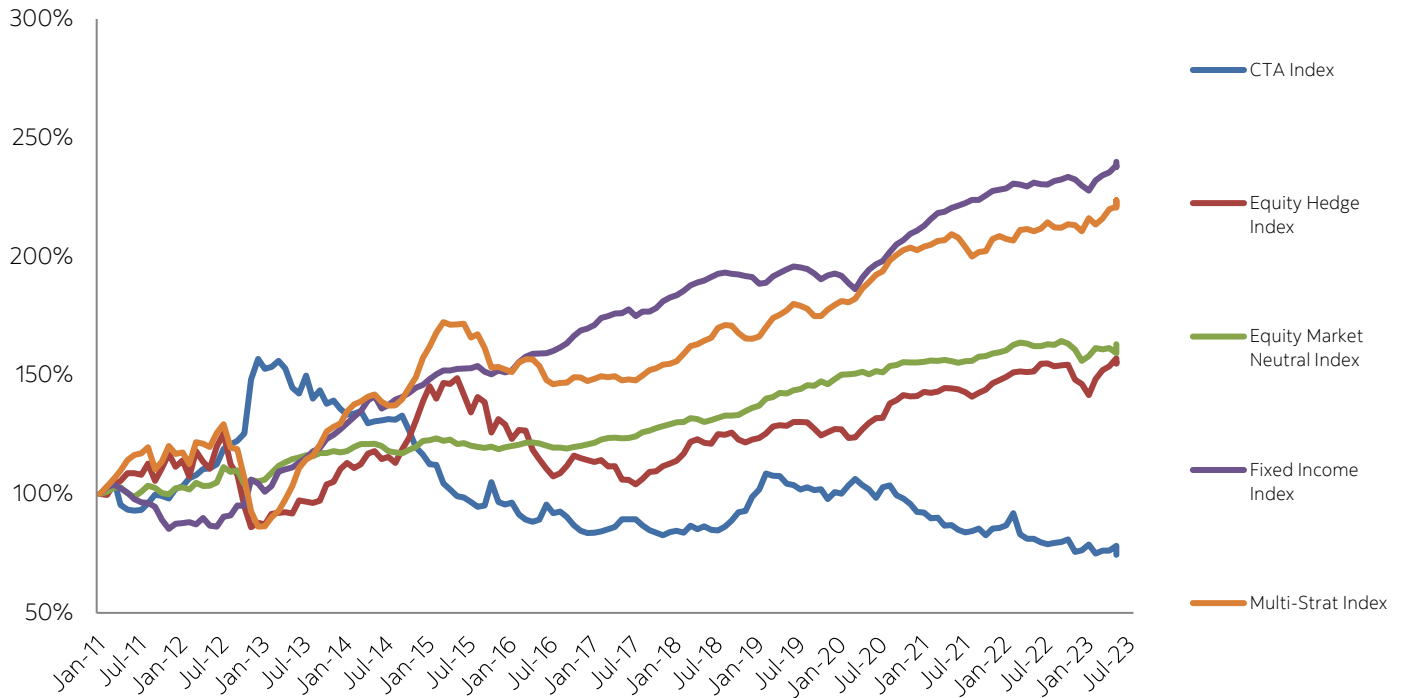
### Scotiabank Canadian Hedge Fund Index Equal-Weighted

	Jan	Feb	Mar	Apr	May	Jun	Jul	Aug	Sep	Oct	Nov	Dec	YTD
<b>2023</b>	3.58%	-0.82%	-0.82%	0.06%	-0.80%	1.14%	1.33%						<b>3.64%</b>
<b>2022</b>	-2.71%	0.14%	0.66%	-2.28%	-2.03%	-3.95%	1.97%	0.22%	-2.82%	1.00%	1.16%	-0.26%	<b>-8.73%</b>
<b>2021</b>	1.46%	4.40%	0.21%	2.00%	0.39%	1.57%	-0.09%	0.71%	-0.45%	0.62%	-0.72%	0.98%	<b>11.56%</b>
<b>2020</b>	0.46%	-2.22%	-9.99%	6.59%	2.97%	3.08%	4.07%	2.23%	-0.15%	-0.04%	4.52%	4.50%	<b>16.02%</b>
<b>2019</b>	2.41%	1.61%	1.01%	1.55%	-1.14%	0.33%	0.12%	-0.22%	-0.83%	-0.35%	1.62%	1.44%	<b>7.74%</b>
<b>2018</b>	1.37%	-1.05%	-0.59%	0.39%	0.88%	-0.17%	-0.54%	0.34%	0.62%	-3.18%	-1.35%	-1.74%	<b>-5.01%</b>
<b>2017</b>	0.39%	0.81%	0.58%	0.59%	0.03%	-0.75%	-0.98%	0.61%	0.97%	2.19%	0.96%	1.05%	<b>6.60%</b>
<b>2016</b>	-2.51%	0.27%	2.25%	1.77%	1.30%	0.57%	2.98%	0.53%	1.02%	-0.47%	0.35%	0.80%	<b>9.12%</b>
<b>2015</b>	1.89%	1.85%	0.07%	-0.40%	0.88%	-0.41%	-0.53%	-1.89%	-1.77%	0.58%	0.65%	-0.24%	<b>0.62%</b>
<b>2014</b>	1.89%	2.67%	-0.62%	0.84%	0.11%	2.32%	-0.06%	0.97%	-1.89%	-1.77%	0.64%	0.32%	<b>5.44%</b>
<b>2013</b>	1.25%	-0.85%	0.39%	-1.47%	0.39%	-1.05%	0.85%	0.79%	0.27%	1.41%	1.15%	1.22%	<b>4.38%</b>
<b>2012</b>	1.24%	0.59%	-2.06%	-1.86%	-2.21%	-1.56%	0.77%	0.58%	2.26%	0.12%	-0.71%	0.66%	<b>-2.28%</b>
<b>2011</b>	0.24%	1.29%	-0.70%	-0.20%	-1.15%	-3.08%	1.57%	-3.22%	-3.81%	1.14%	-0.50%	-0.97%	<b>-9.17%</b>

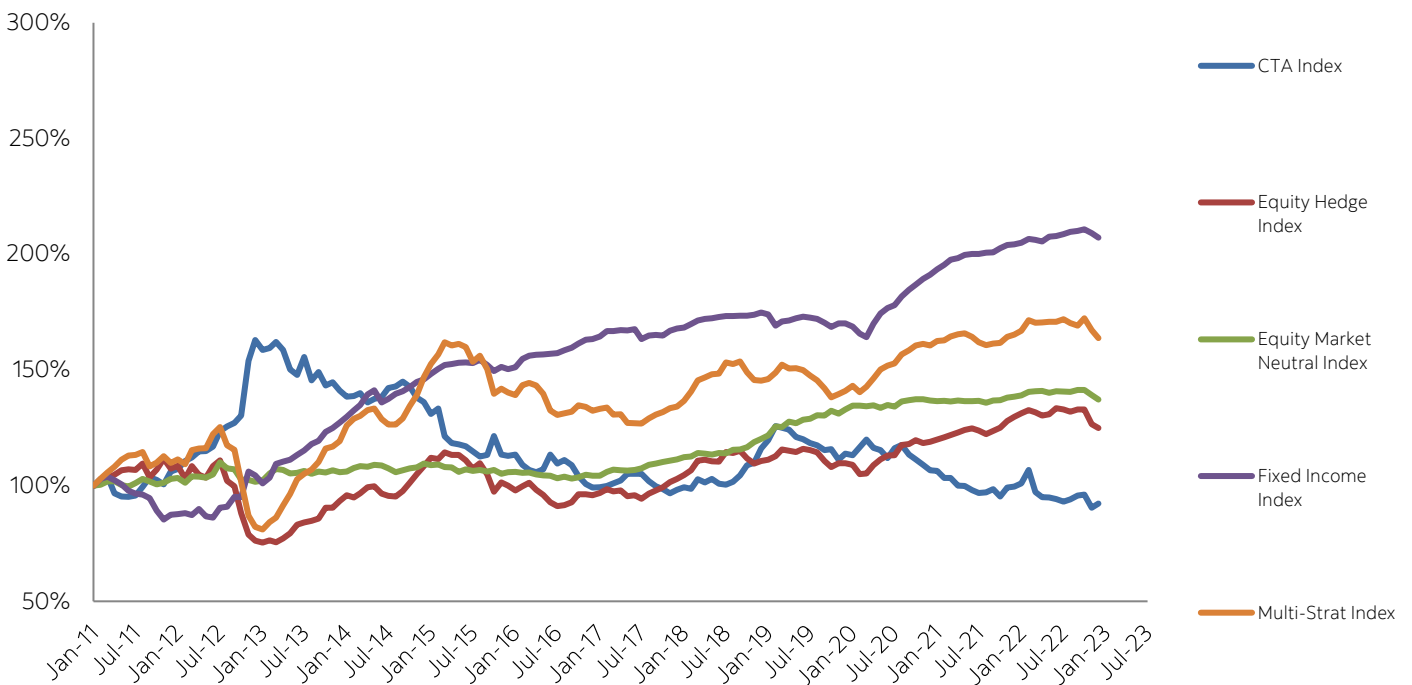


## Sub-Index Performance

### Asset-Weighted



### Equal-Weighted





	Jan	Feb	Mar	Apr	May	Jun	Jul	Aug	Sep	Oct	Nov	Dec	YTD
2023	0.11%	-1.51%	-2.40%	4.22%	0.89%	-0.56%	-0.20%						0.42%
2022	2.22%	4.93%	8.62%	6.05%	-2.02%	0.57%	-3.21%	-0.06%	5.11%	-1.23%	-3.97%	-1.23%	15.98%
2021	2.12%	9.10%	-1.13%	4.46%	1.44%	-1.53%	-1.03%	0.31%	1.41%	2.52%	-4.66%	-1.18%	11.77%
2020	0.13%	0.85%	15.55%	-1.66%	-2.18%	-1.13%	2.77%	2.26%	-4.09%	0.50%	1.34%	9.38%	24.59%
2019	-4.73%	1.71%	-0.09%	2.73%	-4.00%	-0.98%	-0.71%	7.64%	-7.25%	-2.30%	0.77%	0.69%	-7.11%
2018	5.79%	-8.93%	-2.31%	-0.08%	-0.78%	-1.17%	1.10%	1.69%	0.48%	-5.87%	1.87%	2.64%	-6.25%
2017	-2.87%	-0.02%	-3.25%	-0.19%	-1.80%	-1.20%	0.22%	1.44%	-3.16%	4.02%	0.37%	1.44%	-5.13%
2016	3.07%	2.84%	-3.02%	-0.77%	-3.09%	3.86%	1.16%	-3.52%	-1.76%	-2.15%	-2.09%	-0.26%	-5.94%
2015	5.08%	-0.55%	-0.59%	-2.58%	-0.82%	-1.38%	-0.80%	-1.73%	0.33%	-4.00%	2.47%	-0.63%	-5.37%
2014	-0.71%	4.18%	-1.35%	1.49%	-2.00%	-0.40%	1.19%	2.80%	4.19%	0.91%	5.73%	3.00%	20.40%
2013	0.66%	1.12%	1.25%	2.75%	0.00%	-0.04%	-2.97%	-2.22%	-1.20%	-1.78%	1.55%	1.11%	0.07%
2012	-3.93%	-1.98%	-0.86%	1.09%	5.92%	-3.37%	1.42%	-2.05%	-4.24%	-3.31%	-1.58%	0.08%	-12.48%
2011	1.82%	-9.04%	-2.39%	-0.43%	-0.72%	-1.90%	-1.90%	0.53%	7.29%	-6.68%	-0.44%	0.49%	-13.40%

## CTA Index Asset-Weighted

	Jan	Feb	Mar	Apr	May	Jun	Jul	Aug	Sep	Oct	Nov	Dec	YTD
2023	1.79%	-3.15%	-0.26%	3.21%	0.88%	-1.88%	-0.33%						0.11%
2022	2.21%	4.46%	8.10%	4.10%	-1.92%	0.55%	-2.96%	-0.15%	2.99%	-0.65%	-4.16%	-0.23%	12.33%
2021	2.38%	9.44%	-0.94%	4.57%	0.80%	-1.51%	-1.62%	0.84%	0.68%	1.71%	-4.40%	-1.67%	10.05%
2020	0.57%	0.92%	16.18%	-1.82%	-1.91%	-0.88%	2.88%	2.23%	-3.79%	0.71%	1.98%	8.12%	26.50%
2019	-4.77%	1.68%	-0.10%	2.75%	-3.92%	-0.93%	-0.57%	7.57%	-7.25%	-2.31%	0.80%	0.77%	-6.86%
2018	6.02%	-9.67%	-2.32%	-0.02%	-1.89%	-1.01%	0.69%	0.66%	1.27%	-6.55%	1.00%	3.10%	-9.27%
2017	-2.61%	0.31%	-3.66%	0.21%	-2.21%	-1.37%	0.74%	1.22%	-3.28%	3.33%	0.36%	1.21%	-5.84%
2016	3.56%	2.52%	-2.44%	-1.72%	-3.52%	4.59%	0.79%	-4.05%	-1.39%	-2.29%	-3.58%	-0.30%	-7.98%
2015	6.51%	-0.80%	-0.16%	-3.02%	-0.52%	-1.78%	0.86%	-1.15%	0.47%	-4.15%	3.04%	-0.68%	-1.79%
2014	-1.01%	3.64%	-1.74%	1.40%	-1.71%	-0.30%	1.95%	2.88%	3.90%	0.62%	6.37%	3.22%	20.60%
2013	0.62%	1.14%	1.06%	3.70%	-0.02%	0.08%	-2.82%	-2.42%	-1.18%	-1.42%	1.65%	0.72%	0.91%
2012	-5.20%	-2.34%	-0.99%	0.98%	7.05%	-3.72%	0.76%	-2.47%	-3.89%	-2.64%	-1.11%	0.19%	-13.08%
2011	-0.20%	-7.00%	-2.51%	-2.71%	-0.61%	-1.92%	-2.07%	0.60%	10.34%	-7.91%	-1.15%	0.85%	-14.36%

## Equity Hedge Index Equal-Weighted

	Jan	Feb	Mar	Apr	May	Jun	Jul	Aug	Sep	Oct	Nov	Dec	YTD
2023	5.38%	-1.29%	-0.16%	-0.50%	-0.83%	2.30%	2.25%						7.18%
2022	-4.34%	-0.82%	0.57%	-4.11%	-2.43%	-5.50%	3.03%	-0.28%	-4.06%	0.92%	1.07%	-1.91%	-16.80%
2021	0.83%	5.06%	1.07%	2.22%	0.37%	2.14%	-0.12%	0.74%	-1.01%	1.53%	-0.63%	0.95%	13.81%
2020	0.57%	-2.56%	-10.10%	7.58%	3.67%	2.98%	3.04%	3.27%	-0.11%	0.45%	6.83%	4.85%	21.02%
2019	4.13%	2.44%	0.88%	2.34%	-1.57%	0.96%	0.47%	-0.82%	-0.67%	0.25%	2.95%	1.21%	13.15%
2018	1.03%	-0.77%	-0.98%	0.37%	2.00%	-0.37%	-0.69%	0.74%	-0.04%	-4.80%	-1.26%	-3.45%	-8.09%
2017	0.81%	0.84%	0.86%	0.91%	0.59%	-0.85%	-1.17%	1.12%	1.13%	2.33%	1.32%	1.22%	9.45%
2016	-3.62%	0.20%	3.43%	2.28%	1.44%	0.14%	3.94%	0.30%	1.47%	-1.09%	0.44%	0.87%	10.03%
2015	1.44%	2.49%	-0.40%	-0.51%	1.26%	-0.53%	-0.89%	-3.26%	-2.35%	1.51%	0.05%	-0.64%	-1.95%
2014	1.97%	3.97%	0.32%	-0.62%	-0.14%	3.76%	-0.37%	0.88%	-2.89%	-1.98%	1.00%	0.47%	6.32%
2013	1.80%	-1.05%	0.48%	-2.51%	0.40%	-1.59%	2.32%	1.50%	1.29%	2.26%	1.46%	1.53%	8.05%
2012	1.77%	1.62%	-3.00%	-2.27%	-3.34%	-1.81%	0.51%	1.38%	3.59%	0.12%	-0.54%	1.01%	-1.21%
2011	-0.52%	2.56%	-0.98%	0.08%	-2.14%	-3.25%	2.17%	-4.38%	-7.15%	4.19%	-1.42%	-2.02%	-12.62%

## Equity Hedge Index Asset-Weighted

	Jan	Feb	Mar	Apr	May	Jun	Jul	Aug	Sep	Oct	Nov	Dec	YTD
2023	4.40%	-0.63%	0.50%	-0.32%	-0.83%	1.85%	1.60%						6.65%
2022	-4.40%	-0.23%	-0.01%	-2.71%	-2.19%	-5.05%	4.08%	0.36%	-4.08%	1.41%	0.97%	-2.77%	-14.05%
2021	0.56%	4.31%	0.79%	2.00%	0.25%	2.43%	0.74%	1.17%	-0.55%	1.81%	-0.34%	0.88%	14.87%
2020	0.86%	-1.45%	-5.89%	6.57%	2.82%	2.17%	3.24%	2.15%	-0.08%	0.13%	4.73%	3.27%	19.51%
2019	4.77%	2.59%	1.08%	2.14%	-1.38%	0.50%	0.16%	-0.09%	-0.45%	0.38%	2.84%	0.02%	13.12%
2018	1.24%	0.32%	-0.25%	0.22%	2.09%	0.11%	-0.80%	0.26%	0.18%	-4.07%	-1.19%	-3.26%	-5.19%
2017	-0.29%	0.37%	1.09%	-0.15%	-0.27%	-0.79%	-1.38%	1.19%	0.94%	1.91%	0.84%	0.96%	4.43%
2016	-2.86%	0.28%	2.65%	2.14%	1.57%	0.11%	4.57%	0.96%	1.55%	-0.36%	0.14%	1.20%	12.42%
2015	1.56%	2.36%	0.44%	-0.19%	1.20%	0.01%	-0.15%	-2.04%	-2.25%	1.12%	1.05%	-0.10%	2.94%
2014	2.65%	4.23%	0.88%	-1.17%	-0.37%	3.35%	-0.18%	0.70%	-2.38%	-0.89%	0.98%	0.48%	8.39%
2013	0.69%	-2.39%	0.09%	-5.02%	-0.09%	-1.86%	2.28%	2.72%	0.31%	1.94%	0.92%	1.06%	0.39%
2012	3.07%	-0.18%	-6.35%	-3.39%	-3.51%	-2.86%	1.23%	2.84%	3.85%	-0.91%	-0.64%	-0.69%	-7.78%
2011	-3.57%	4.65%	-0.26%	1.66%	-4.74%	-5.24%	4.89%	-1.52%	-9.31%	4.60%	-1.77%	-4.74%	-15.32%



	Jan	Feb	Mar	Apr	May	Jun	Jul	Aug	Sep	Oct	Nov	Dec	YTD
2023	-0.20%	0.46%	-0.27%	0.52%	-0.92%	-0.29%	-0.80%						-1.51%
2022	-0.91%	0.79%	-0.20%	0.46%	-0.65%	0.23%	0.06%	0.16%	-0.31%	0.29%	1.09%	0.95%	1.95%
2021	0.17%	2.89%	-0.36%	0.97%	-0.74%	1.20%	0.57%	0.74%	0.07%	-0.38%	-0.22%	1.36%	6.40%
2020	0.12%	-0.25%	-1.26%	2.50%	0.72%	0.68%	2.47%	0.91%	0.61%	-0.20%	0.85%	1.71%	9.16%
2019	1.37%	0.70%	0.75%	0.02%	1.59%	0.04%	0.51%	0.26%	-0.91%	-0.19%	0.63%	0.17%	5.03%
2018	1.12%	0.24%	0.07%	-0.55%	0.43%	-0.10%	-0.09%	0.66%	-0.03%	-1.61%	-1.35%	0.41%	-0.84%
2017	0.11%	-0.18%	0.26%	-0.17%	-0.04%	0.07%	-0.56%	0.65%	0.12%	0.84%	0.34%	0.31%	1.76%
2016	0.01%	-0.25%	0.31%	-0.84%	0.94%	-0.50%	1.67%	0.37%	0.35%	-0.07%	-0.37%	-0.18%	1.44%
2015	3.19%	-0.19%	1.87%	-0.61%	1.25%	0.31%	1.17%	-0.06%	1.58%	-0.93%	1.38%	1.22%	10.57%
2014	0.28%	1.34%	-0.22%	-0.43%	0.64%	-0.12%	1.29%	0.12%	0.90%	1.83%	1.22%	1.26%	8.39%
2013	1.49%	0.88%	-0.15%	-0.15%	0.25%	0.63%	1.44%	0.43%	0.70%	0.49%	0.51%	0.83%	7.60%
2012	-0.38%	0.11%	-0.79%	-0.29%	-0.18%	-1.02%	0.64%	-0.83%	0.49%	1.10%	-0.43%	0.11%	-1.47%
2011	0.20%	-1.01%	-0.11%	-1.84%	1.04%	-0.55%	0.35%	-0.71%	0.66%	-1.47%	0.65%	0.06%	-2.74%

## Equity Market Neutral Index Asset-Weighted

	Jan	Feb	Mar	Apr	May	Jun	Jul	Aug	Sep	Oct	Nov	Dec	YTD
2023	-0.17%	0.90%	0.25%	0.20%	-0.51%	0.64%	-0.45%						0.87%
2022	-0.80%	0.88%	0.39%	1.41%	-0.95%	1.16%	-0.10%	1.14%	1.95%	-0.21%	0.57%	1.56%	7.18%
2021	1.49%	3.08%	0.49%	0.76%	-1.65%	2.24%	0.68%	0.56%	0.43%	-1.72%	1.83%	1.40%	9.91%
2020	-1.13%	-0.21%	-0.45%	2.59%	0.58%	1.05%	2.41%	1.51%	0.60%	-0.73%	-2.18%	1.19%	5.22%
2019	2.11%	-0.35%	0.37%	-1.40%	1.58%	0.83%	1.01%	-2.23%	-0.41%	-0.08%	0.56%	0.99%	2.95%
2018	1.43%	0.59%	-0.23%	-0.72%	0.03%	0.50%	-0.14%	1.00%	-0.66%	-1.57%	-2.96%	1.35%	-1.46%
2017	0.42%	-0.12%	0.26%	-0.30%	-0.45%	0.38%	0.12%	1.10%	0.24%	0.64%	0.32%	0.52%	3.15%
2016	0.10%	0.18%	0.50%	-0.68%	0.92%	-0.39%	1.75%	0.32%	0.74%	-0.05%	-0.04%	0.16%	3.55%
2015	2.23%	0.39%	1.26%	-0.19%	0.93%	0.45%	1.08%	-0.13%	1.26%	-0.84%	1.48%	1.27%	9.55%
2014	0.11%	1.28%	-0.34%	-0.89%	0.62%	0.68%	0.69%	0.07%	0.18%	1.21%	0.97%	0.67%	5.35%
2013	1.07%	0.52%	0.17%	-0.26%	0.18%	0.56%	1.39%	0.51%	0.81%	0.62%	0.71%	0.58%	7.06%
2012	0.50%	0.62%	0.13%	-0.31%	-0.86%	-0.60%	-0.04%	-0.37%	0.66%	0.29%	0.60%	0.54%	1.14%
2011	0.67%	-0.83%	0.45%	-1.62%	0.40%	-0.91%	-0.47%	-0.33%	0.46%	-0.87%	0.68%	0.43%	-1.96%

## Fixed Income Index Equal-Weighted

	Jan	Feb	Mar	Apr	May	Jun	Jul	Aug	Sep	Oct	Nov	Dec	YTD
2023	2.32%	0.58%	-1.31%	1.26%	0.22%	0.79%	1.09%						5.01%
2022	-0.82%	-1.24%	-0.05%	-1.10%	-0.51%	-1.11%	1.09%	0.82%	-1.41%	0.12%	1.90%	0.91%	-1.46%
2021	1.32%	1.11%	0.02%	0.64%	0.30%	0.72%	0.26%	0.28%	0.31%	-0.05%	-0.23%	0.31%	5.09%
2020	0.64%	-0.41%	-15.86%	4.43%	2.72%	3.97%	3.32%	1.70%	0.59%	0.80%	2.53%	1.22%	4.00%
2019	2.12%	1.11%	0.45%	1.28%	-0.52%	0.70%	0.73%	-0.50%	0.36%	0.13%	0.36%	0.88%	7.30%
2018	0.85%	-0.26%	-0.32%	1.01%	0.15%	0.39%	0.48%	0.17%	0.39%	-0.82%	-0.92%	-1.60%	-0.51%
2017	0.98%	1.16%	0.34%	0.64%	0.25%	-0.04%	0.34%	0.01%	0.89%	0.73%	0.14%	0.30%	5.89%
2016	-1.78%	-0.89%	3.54%	2.58%	1.32%	0.72%	2.10%	1.60%	1.19%	1.35%	0.93%	1.24%	14.71%
2015	-2.83%	1.11%	0.26%	0.55%	0.35%	-0.18%	-0.38%	-0.97%	-0.99%	0.85%	-0.02%	-0.79%	-3.04%
2014	0.87%	0.96%	0.35%	0.17%	0.35%	0.20%	0.05%	0.05%	0.03%	0.25%	0.55%	-0.49%	3.38%
2013	1.44%	0.00%	0.24%	-0.05%	0.27%	-2.48%	0.88%	0.14%	-0.10%	1.22%	0.59%	0.23%	2.36%
2012	2.35%	0.91%	0.31%	0.11%	0.12%	0.22%	0.80%	0.68%	1.15%	0.96%	0.20%	0.67%	8.79%
2011	1.41%	1.13%	0.31%	0.37%	0.02%	-0.15%	0.92%	-1.42%	-1.79%	1.22%	-0.61%	0.52%	1.90%

## Fixed Income Index Asset-Weighted

	Jan	Feb	Mar	Apr	May	Jun	Jul	Aug	Sep	Oct	Nov	Dec	YTD
2023	2.15%	0.65%	-1.81%	1.07%	0.34%	1.10%	1.41%						4.96%
2022	-0.92%	-1.14%	-0.12%	-0.81%	-0.54%	-0.85%	1.22%	1.16%	-1.13%	0.23%	2.08%	1.17%	0.29%
2021	1.45%	1.43%	-0.14%	0.84%	0.40%	0.68%	0.10%	0.15%	0.36%	0.02%	-0.54%	0.36%	5.21%
2020	0.97%	-0.70%	-19.99%	6.80%	2.94%	5.32%	3.65%	1.93%	0.60%	0.97%	3.20%	1.19%	4.09%
2019	1.86%	0.97%	0.49%	1.25%	-0.29%	0.94%	0.97%	-0.48%	0.93%	0.73%	0.50%	0.96%	9.19%
2018	0.89%	-0.20%	-0.32%	0.68%	-0.29%	-0.03%	0.66%	0.25%	0.50%	-0.48%	-1.10%	-0.91%	-0.40%
2017	1.34%	1.17%	0.28%	0.75%	0.43%	0.46%	0.62%	0.02%	0.85%	0.79%	0.24%	0.25%	7.43%
2016	-1.59%	-1.36%	2.65%	1.75%	1.13%	0.69%	1.93%	1.59%	0.89%	1.28%	0.61%	0.96%	10.96%
2015	0.21%	1.38%	0.79%	0.78%	0.63%	-0.22%	-0.39%	-0.95%	-1.27%	0.91%	0.39%	-0.51%	1.72%
2014	1.07%	1.24%	0.59%	0.48%	0.76%	0.72%	0.25%	-0.26%	-0.15%	-0.34%	-0.22%	-1.43%	2.70%
2013	1.66%	0.47%	0.64%	0.10%	0.93%	-1.59%	1.03%	0.04%	0.79%	1.61%	0.92%	0.47%	7.26%
2012	2.37%	1.45%	0.73%	0.15%	0.04%	0.59%	0.91%	1.14%	1.88%	1.35%	0.50%	0.91%	12.67%
2011	1.37%	1.08%	0.05%	0.38%	0.11%	0.09%	0.66%	-1.63%	-0.66%	1.03%	-0.51%	0.48%	2.44%



	Jan	Feb	Mar	Apr	May	Jun	Jul	Aug	Sep	Oct	Nov	Dec	YTD
2023	2.47%	-1.12%	-1.47%	0.05%	-2.39%	1.37%	1.19%						0.02%
2022	-3.05%	1.02%	1.20%	-1.06%	-2.32%	-4.54%	2.24%	-0.17%	-2.56%	1.96%	3.64%	-0.55%	-4.44%
2021	1.86%	5.26%	0.64%	3.37%	0.34%	1.04%	0.42%	1.01%	-0.22%	1.05%	0.62%	1.45%	18.07%
2020	0.43%	-3.82%	-12.56%	9.20%	4.20%	4.47%	6.92%	1.88%	0.26%	-0.18%	2.52%	4.98%	17.81%
2019	1.59%	1.46%	1.51%	0.57%	-0.15%	0.01%	0.42%	-1.07%	-1.18%	-0.28%	1.35%	2.47%	6.82%
2018	2.75%	-0.66%	0.09%	0.09%	0.05%	0.61%	-0.92%	-0.70%	1.90%	-2.93%	-2.11%	0.06%	-1.88%
2017	0.20%	1.00%	0.62%	0.26%	-0.96%	-1.44%	-0.71%	0.42%	0.16%	1.57%	0.66%	0.99%	2.76%
2016	-1.93%	1.67%	2.50%	2.68%	1.11%	0.65%	2.49%	1.12%	1.34%	0.43%	-0.43%	1.19%	13.51%
2015	1.86%	2.35%	-1.07%	0.08%	-0.59%	-1.53%	-1.38%	-2.42%	-2.73%	1.04%	0.96%	1.59%	-2.00%
2014	2.91%	3.44%	0.89%	0.90%	0.24%	3.21%	-0.37%	0.67%	-3.02%	-2.24%	-0.18%	0.44%	6.87%
2013	0.45%	-2.28%	0.07%	-2.85%	-0.14%	-0.09%	1.69%	1.32%	0.84%	1.30%	0.48%	1.86%	2.57%
2012	3.06%	0.68%	-0.80%	-2.55%	-5.06%	-1.55%	0.55%	0.57%	2.11%	-0.54%	-1.19%	0.59%	-4.30%
2011	2.65%	3.34%	-0.84%	0.45%	-0.86%	-3.97%	1.71%	-3.76%	-7.07%	1.63%	-1.19%	-0.74%	-8.79%

## Multi-Strat Index Asset-Weighted

	Jan	Feb	Mar	Apr	May	Jun	Jul	Aug	Sep	Oct	Nov	Dec	YTD
2023	-0.75%	2.24%	-0.76%	0.55%	-1.07%	0.22%	0.29%						0.68%
2022	-0.31%	0.07%	-0.93%	2.20%	-2.39%	0.84%	0.03%	2.32%	3.43%	-0.34%	0.35%	1.43%	6.76%
2021	2.51%	2.09%	-1.63%	-0.08%	-1.95%	2.68%	0.41%	1.46%	0.78%	-2.39%	2.85%	-0.36%	6.36%
2020	2.01%	0.76%	-1.72%	3.74%	0.55%	3.43%	1.77%	0.17%	3.47%	-0.23%	-0.44%	2.21%	16.72%
2019	-1.28%	1.20%	1.80%	0.50%	1.22%	-1.37%	1.12%	0.01%	-0.18%	-0.49%	1.29%	0.19%	4.03%
2018	-0.34%	2.15%	0.19%	-0.45%	0.55%	1.24%	-0.99%	-0.07%	0.70%	-0.21%	-1.16%	2.62%	4.24%
2017	0.36%	0.76%	0.14%	1.26%	-0.71%	-1.87%	-2.00%	0.95%	0.22%	2.49%	0.61%	-0.60%	1.54%
2016	-0.32%	0.82%	2.32%	1.50%	1.63%	0.76%	2.33%	1.15%	1.05%	0.49%	-0.47%	0.73%	12.63%
2015	2.32%	2.35%	0.73%	1.11%	1.48%	-0.43%	-0.64%	-1.78%	0.01%	1.57%	1.09%	0.95%	9.04%
2014	2.02%	2.06%	0.50%	0.90%	0.74%	2.47%	0.79%	-0.15%	-1.89%	-1.36%	-0.02%	0.53%	6.68%
2013	0.72%	-0.25%	0.22%	-1.18%	0.33%	-0.32%	1.39%	1.55%	0.49%	1.01%	0.27%	0.63%	4.94%
2012	2.68%	0.84%	-0.01%	-1.81%	-3.85%	-1.23%	0.42%	0.07%	1.58%	-0.10%	-1.03%	0.68%	-1.89%
2011	3.56%	2.61%	-0.63%	0.14%	0.14%	-3.37%	0.83%	-3.52%	-5.05%	0.21%	-0.78%	-0.65%	-6.63%



## Constituents

Algonquin Debt Strategies Fund LP	Ewing Morris Opportunities Fund LP Share Class B	Palos Income Fund LP Class X
AlphaNorth Partners Fund	Ewing Morris Partners Fund LP	Panorama Fund LP
Altema Diversified Equity Market Neutral Fund - Series F	Formula Growth Alpha Fund Class F USD	PCJ Absolute Return Strategy CAD
Amethyst Arbitrage Fund (CAD)	Formula Growth Focus Fund Class F USD	Peregrine Fund
Amplus Credit Income Fund	Formula Growth Global Opportunities Fund Class F USD	Picton Mahoney Income Opportunities Fund A
Arrow Capital Management, Inc. (Wavefront Global Diversified I - F)	Formula Growth Hedge Fund Class F USD	Picton Mahoney Long Short Equity Fund A
Arrow Performance Fund Class A	Friedberg Asset Allocation Fund Ltd.	Picton Mahoney Market Neutral Equity Fund A
Auspice Capital Advisors Ltd (Auspice Diversified)	Friedberg Global-Macro Hedge Fund, Ltd.	Polar Long/Short Fund
Aventine Canadian Equity Fund	Galliant Equity Long/Short Fund LP	Polar Multi-Strategy Fund
Bedford Park Opportunities Fund Class A Series 1	Good Opportunities Fund - F Class	Primevestfund
Broadview Dark Horse LP - Class A	Goodwood Fund A	Relevance Diversified Credit Fund Series F CAD
BT Global Growth Fund LP	Guardian Strategic Income Fund Composite	Rosalind Capital Partners L.P.
CC&L All Strategies Fund	JC Clark Adaly Trust D	RP Debt Opportunities
CC&L Multi-Strategy Composite	JC Clark Focused Opportunities Fund	RP Select Opportunities
CC&L Q Global Equity Market Neutral (CAD)	JC Clark Preservation Trust Class B	Stornoway Recovery Fund LP
DKAM Capital Ideas Fund, L.P.	Jemekk Long/Short Fund	Vantage Protected Performance Fund
Dynamic Alpha Performance Fund - Series A	Jemekk Total Return Fund	Venator Alternative Income Fund Class F
Dynamic Global Growth Opportunities Fund - Series F	JM Catalyst Fund	Venator Founders Fund Class A
Dynamic Income Opportunities Fund - Series A	Lawrence Park Credit Strategies Fund	Vision Opportunity Fund LP
East Coast Investment Grade II Fund Class F	LionGuard Opportunities Fund	Waratah Alternative ESG Fund Class A
EHP Foundation Alternative Fund Class F	Lions Bay Fund Class A	Waratah Income Class F
EHP Global Multi-Strategy Alternative Fund Class F	Lumen Long Short Equity Fund LP - Class B	Waratah One Class A
Ewing Morris Canadian Small Cap LP Class O	Lynwood Opportunities Fund Class F	Waratah Performance Class A
Ewing Morris Flexible Fixed Income Fund LP - Class P	Ninepoint Credit Income Opportunities Class B	XIB Fund Class C

Please send Index and subscription inquiries to [schfindex.data@scotiabank.com](mailto:schfindex.data@scotiabank.com)

Media inquiries: (416) 933-3250

[www.gbm.scotiabank.com](http://www.gbm.scotiabank.com)

**IMPORTANT NOTICE AND DISCLAIMER:** The Bank of Nova Scotia ("Scotiabank") calculates and publishes the Scotiabank Canadian Hedge Fund Index (the "Index") at its own expense. It is prepared solely as an information service to financial market participants and is published on a best-efforts basis. Scotiabank and/or its affiliates do not recommend, express any opinion or accept any liability regarding the constituent funds or their respective holdings by virtue of their inclusion in the Index. The data used to construct the Index is provided on a voluntary basis by the constituent funds and is not reviewed, audited or independently verified in any way by Scotiabank and/or its affiliates.

In the ordinary course of business, Scotiabank and/or its affiliates may hold or trade, for their own accounts and the accounts of their customers, funds included in the Index, or any of the securities held by funds included in the Index, and/or may have an advisory, underwriting or other relationship with a fund included in the Index. The Index is based on data believed to be reliable. No guarantee is made as to the accuracy, timeliness, or completeness of the data used in the Index. Neither Scotiabank nor its affiliates, accept liability whatsoever for any loss arising from any use of this report or its contents. In the event data input to the Index calculation is published and subsequently believed to be in error, Scotiabank may at its sole discretion declare the data error to be immaterial to the Index value, and is under no obligation to re-calculate an already published Index value. The Index construction rules, guidelines, and practices may be changed at any time at Scotiabank's sole discretion, though Scotiabank will endeavor to provide reasonable advance notice of such changes, including termination of the Index. The information included herein is not intended for use by retail clients.

™ Trademark of The Bank of Nova Scotia. Used under license, where applicable. Scotiabank, together with "Global Banking and Markets", is a marketing name for the global corporate and investment banking and capital markets businesses of The Bank of Nova Scotia and certain of its affiliates in the countries where they operate, including Scotia Capital Inc., Scotia Capital (USA) Inc., and Scotia Capital Inc. is a Member of the Canadian Investor Protection Fund. Scotia Capital (USA) Inc. is a registered broker-dealer with the SEC and is a member of FINRA, NYSE and SIPC. Scotia Capital (Europe) Limited is authorized and regulated by the Financial Services Authority.

The Scotiabank Canadian Hedge Fund Index is copyright The Bank of Nova Scotia 2020.